

XM-1015W



01/ The artwork of the next generation



The flexible base for XPOS can be adjusted from 65 degree down to 15 degree and the display can be tilted 180 degree. Adjust your desired angle to enjoy its exquisite design.



02/ Various Screen Size & Resolution



Display 15"+8"

Main Screen: 15"
TFT LCD
1024x768

Customer Screen:
8" TFT LCD
1024x600



Display 15"+10"

Main Screen: 15"
TFT LCD
1024x768

Customer Screen:
10" TFT LCD
1280x800



Display 15"+15.6"

Main Screen: 15"
TFT LCD
1024x768

Customer Screen:
15.6" TFT LCD
1920x1080



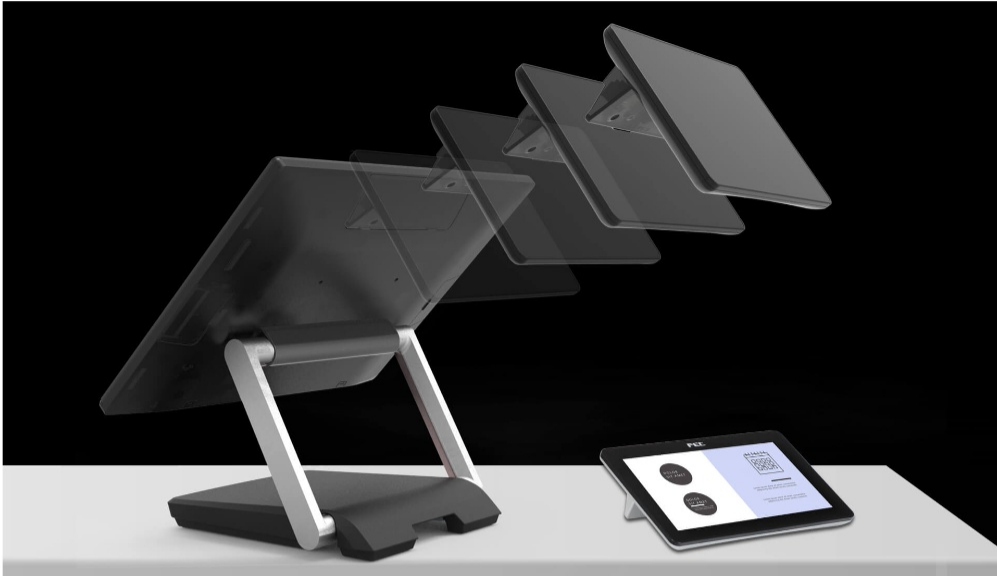
Display 15"+15"

Main Screen: 15"
TFT LCD
1024x768

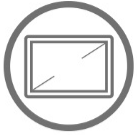
Customer Screen:
15" TFT LCD
1024x768

03/ Easy Docking Display

Optional LCM. 8in, 10in, 15in, or 15.6 in customer display can be docking on the top of the XPOS to present key transactional information or more.



Specifications



Display

- 15.6" TFT, 1920 x 1080



Touch

- Non-Touch (Available for USB DP or FEC DP)
- True-Flat PCAP (Available for USB DP)



Brightness

- 300 nits



MTBF

- 50K Hours



Speaker

- 4ohm 2W (Available for USB DP)



Power

- 12V DC (Power From USB DP)



Mounting

- Docking (Available For USB DP or FEC DP)
- Extended (Available For USB DP)
- VESA 75 x 75 mm



Certification

- FCC / CE Class B



Appearance

- Aluminum Die-casting + Plastic
- Galaxy Grey
- Silver



Temperature

- Operation: 0 °C ~ 40 °C (32 °F ~ 104 °F)
- Storage: -20 °C ~ 60 °C (-4 °F ~ 130 °F)



Dimensions (W x H x D)

- Display Only: 236 x 369 x 24 mm
- Carton: 460 x 350 x 140 mm



Weight

- Display Only (Net): 4.5 Kg
- Display Only (Gross): 5.5 Kg



Port

- 1 x USB DP or FEC DP