

PP-8643



AerPPC PP-8643 is an advanced modular All-in-One mega size panel PC. It equips with Intel® H81 Chipset and offers selections of Intel® Celeron®, Core i3 or Core i5 processors for flexible applications. With its 32 inches mega size monitor, it is perfect for HD interactive digital signage.

01/ Slim, Cool & Chic

FEC give you a high performance panel pc with ultra slim profile.

PP-8643 is made of alloy aluminum die-casting with unique cooling design and perfect thermal management.

Sleek and silk-line surface enhance this smart business helper a modern and stylish attractiveness.



02/ Innovative Modular Design

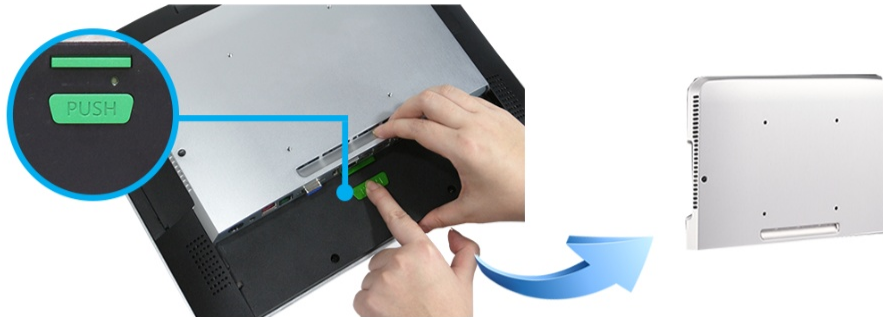
PP-8643 is an advanced 32" modular All-in-One panel pc. Panel, CPU, HDD are all simply swappable without complicated procedures.

The design is incredibly easy to understand with, it makes installation service and upgrade very efficient and flexible.



03/ Press Then Slide

This FEC's revolutionary design draws all the attentions! Only 2 steps are needed to start maintaining, changing, assembling, and upgrading. Things are just easy and smooth!



04/ Optional 2nd I/O

FEC offer 5 types of additional I/O options on the modular main I/O board. With optional 2nd I/O, it creates extra flexibility when purchasing and allows users to fully apply PP-8643 to multiple requirements.



05/ Maximize Your Solutions

With simple procedures, PP-8643 can be transformed to an information KIOSK or a wall mounted HD digital signage.

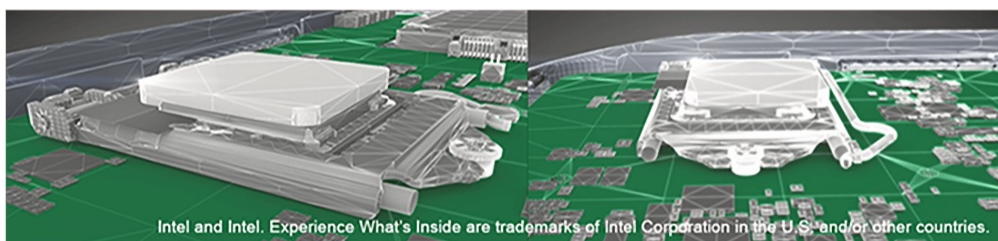
You will be amazed by PP-8643's flexibility and various applications!

With 32 inches mega monitor, all the contents are not just bigger but more alive & more pleasing to watch!

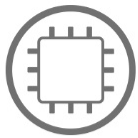


06/ Intel® Inside PP-8643

- 4th Generation Intel® Core™ i3 and i5 Processors
- Intel® H81 Chipset (Intel® DH82H81 PCH)



Specifications



CPU

- Intel® Celeron G1820TE 2.20GHz
- Intel® Core i3-4330TE 2.40 GHz
- Intel® Core i5-4590T 3.0 GHz



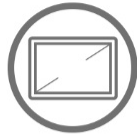
Memory

- 4GB Standard, Max: 16GB (2 x So-DIMM DDR3L)



Storage

- 1 x 2.5" SATA HDD or SSD
- 1 x M.2 Storage (Optional)



Display

- 32" TFT, 1920 x 1080



Touch

- True-Flat PCAP



Brightness

- 500 nits



MTBF

- 50K Hours



Power

- 12V / 150W External Adapter



OS

- Windows 10



Mounting

- VESA 100 x 100 mm



Certification

- FCC / CE Class B



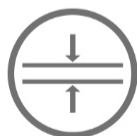
Appearance

- Aluminum Die-casting + Plastic
- Black



Temperature

- Operation: 0 °C ~ 40 °C (32 °F ~ 104 °F)
- Storage: -20 °C ~ 60 °C (-4 °F ~ 130 °F)



Dimensions (W x H x D)

- Product: 774 x 469 x 76 mm
- Carton: 915 x 637 x 215 mm



Weight

- Net: 16.8 Kg
- Gross: 18.6 Kg



Port

- 1 x RJ45 (COM1) RS232 with RI / 5V / 12V Selectable
- 4 x USB Type A (2 x USB 2.0, 2 x USB 3.0)
- 1 x PUSB 24V
- 1 x RJ11 Cash Drawer (12V / 24V)
- 1 x RJ45 GigaLAN
- 2 x Video Port
- 1 x 12V DC Input
- 1 x 12V DC Jack 2.5 mm Output

- Side I/O Interface:
1 x USB 2.0 Type A



Optional

- Type C: 2 x RJ45 (COM 2 & COM 3) RS232 with RI / 5V / 12V Selectable; 1 x PUSB 12V
- Type G: 3 x PUSB 12V
- Type G: 1 x DB9 (COM 2) with RI / 5V / 12V Selectable; 2 x USB 2.0; 1 x Phone Jack; 1 x Power Jack 2.5mm
- Type K: 1 x DB9 (COM 2) with RI / 5V / 12V Selectable; 2 x PUSB 12V