



Argox iLabelPrint App

User Manual



<http://www.argo.com>

service@argo.com

Version: 1.2

Contents

1. Introduction to Argox iLabelPrint	1
1.1 System Requirement	1
1.2 Supported Language	1
1.3 Supported Transmission Connection	1
2. Using the iLabelPrint With Your Mobile Device	2
2.1 Installing the iLabelPrint.....	2
2.2 Printer Connection	3
2.2.1 Printer Connection via Bluetooth	3
2.2.2 Printer Connection via Wi-Fi.....	4
2.2 Printer Connection via USB (for Android only).....	6
2.3 Setting up the iLabelPrint	8
2.3.1 Print Settings.....	8
2.3.2 Import File	13
2.3.3 Change Language	15
2.3.4 About.....	15
3. Designing Labels with iLabelPrint	17
3.1 Download Label Form	17
3.2 Database.....	20
3.2.1 Database Type.....	21
3.2.2 CSV Database Settings.....	21
3.3 New Label.....	26
3.3.1 Label	26
3.3.2 Object.....	28
3.3.3 Operate	31
3.3.4 Properties.....	40
3.3.5 Save Label.....	42
3.3.6 Print Label	44
3.3.7 Share, Edit, and Print from Label List	45

1. Introduction to Argox iLabelPrint

ARGOX iLabelPrint App (the App) is a label design and printing App for Android OS and iOS on mobile device (phone or pad). You can use the App to print barcode or labels from the mobile device to the ARGOX printers which supports Bluetooth module. You also can download the label form files from the cloud storage service.

1.1 System Requirement

The minimum system requirements are listed as below:

- Phone or pad (TBD) with Android OS or iOS
- Android Jelly Bean 4.3 (API 18) or newer, and iOS 9 or newer
- At least one ARGOX label printer which supports AGDI data format

1.2 Supported Language

The supported languages are:

- English
- Traditional Chinese
- Simplified Chinese

1.3 Supported Transmission Connection

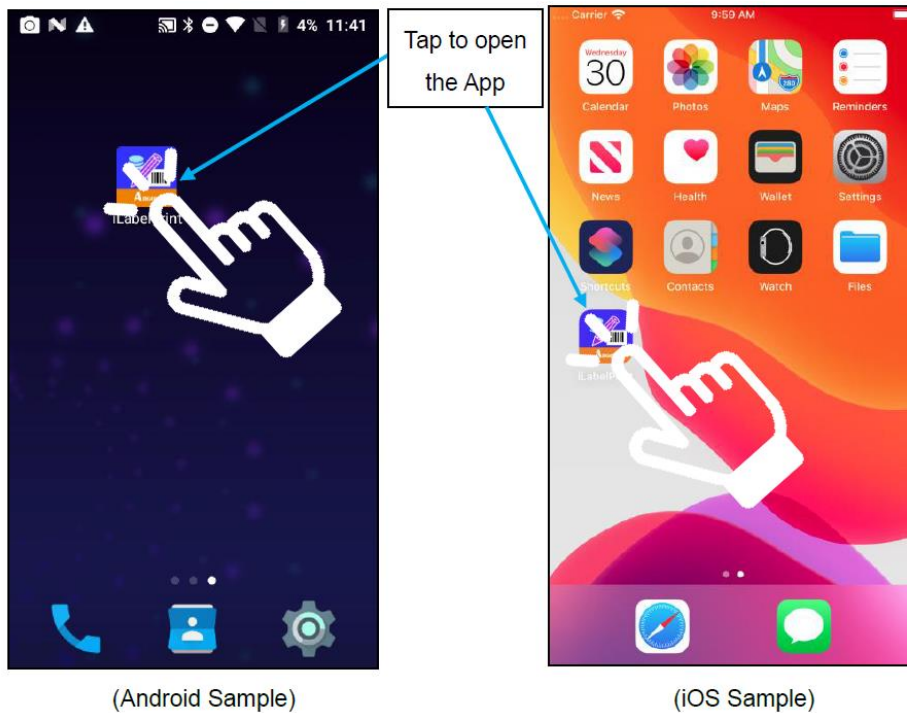
The supported transmission connections are Bluetooth, Wi-Fi, LAN, and USB.

2. Using the iLabelPrint With Your Mobile Device

Follow the instructions in these sections to use the iLabelPrint with your mobile device.

2.1 Installing the iLabelPrint

Download the iLabelPrint App from the Google Play Store or the Apple Store. After you have finished downloading the iLabelPrint App on your mobile device, click on this icon shown on the screen of the mobile device to open the App to install it. After finish installing the App, tap the App icon.



After the App is launched, the home screen with a label list shows up.



2.2 Printer Connection

You can connect printers to your host devices via Bluetooth, Wi-Fi, or USB.

2.2.1 Printer Connection via Bluetooth

➤ To Android Devices

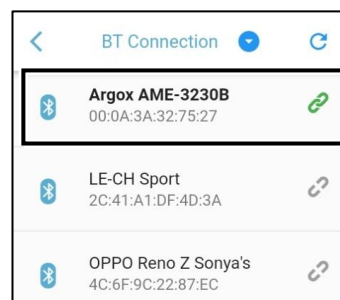
In Android, the Bluetooth classic is used to connect to the printer. To connect an Android device, press the connection button. You can select a printer to connect in Bluetooth connection screen.



When you enter BT connection screen and the Bluetooth setting of the mobile device is turned on, the App will start to discover the Bluetooth device and the circular progress bar is rotating.



When there is a Bluetooth device found and selected, the device is shown on the screen of the mobile device.



➤ To iOS Devices

In iOS, the Bluetooth Low Energy (BLE) is used to connect to the printer. To connect an iOS device, press the connection button. You can select a printer to connect in Bluetooth connection screen.



When you enter BT connection screen and the Bluetooth setting of the mobile device is turned on, the App will start to discover the Bluetooth device and the circular progress bar is rotating.



When there is a Bluetooth device found and selected, the device is shown on the screen of the mobile device.



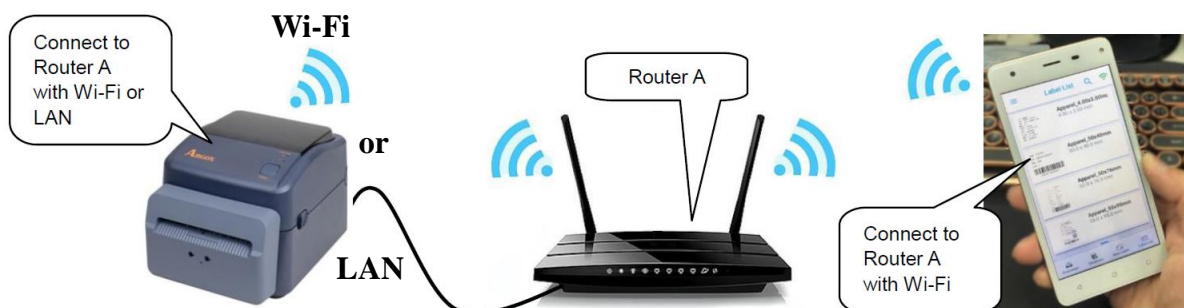
2.2.2 Printer Connection via Wi-Fi

iLabelPrint App can connect and print to the network printer which supports the AGDI zipped image format with Wi-Fi connection. The printer and the mobile device must connect to the same network segment.

First of all, make your printer connect to a router with Wi-Fi or LAN.



You should have a mobile device wireless connecting to the router to which your printer has connected.



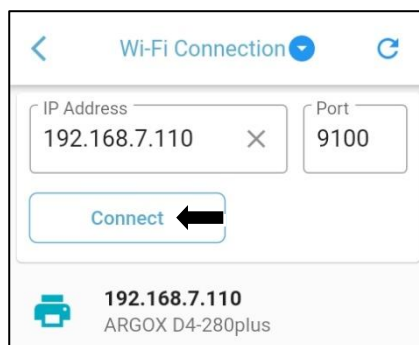
Press the connection button of the iLabelPrint App on the mobile device.



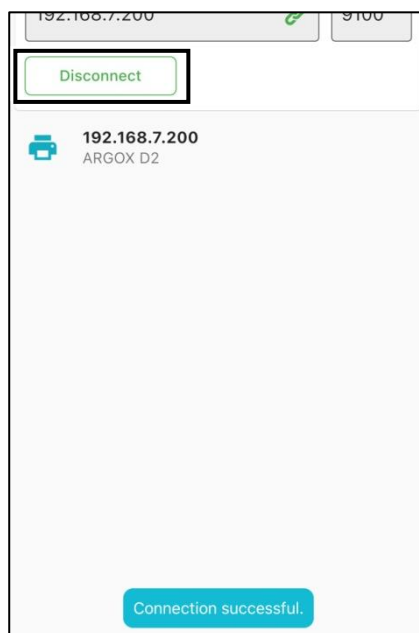
Drop down the menu button title area and change the wireless connection mode to Wi-Fi Connection. When you enter Wi-Fi connection screen and the Wi-Fi setting of the mobile device is turned on, the App will start to discover the network printer and the circular progress bar is rotating.



When there is Wi-Fi device found, the item list is displayed. It displays the IP address and the printer name of the discovered network printer. After the network printer is selected, the settings are saved and the App is trying to connect to the network printer. Then, press the “Connect” button. When the button is pressed, the App is based on the IP address and port setting to connect to the printer.

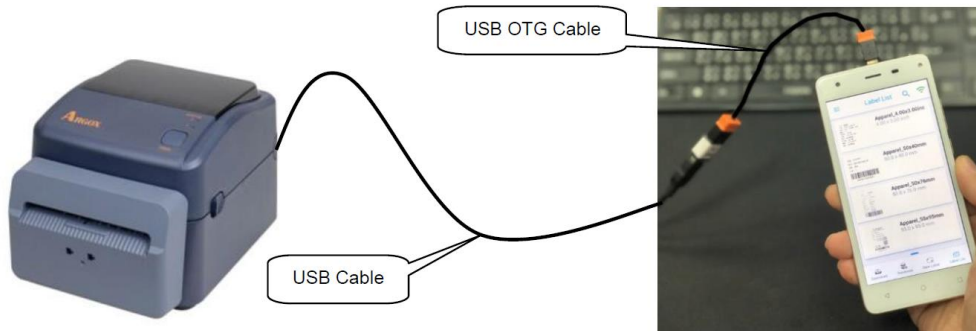


When the printer is connected, the button is changed to "Disconnect" button.



2.2 Printer Connection via USB (for Android only)

To use USB connection function, the mobile device must support OTG function and the OTG cable is necessary for the connection.



Press the connection button of the iLabelPrint App on the mobile device.



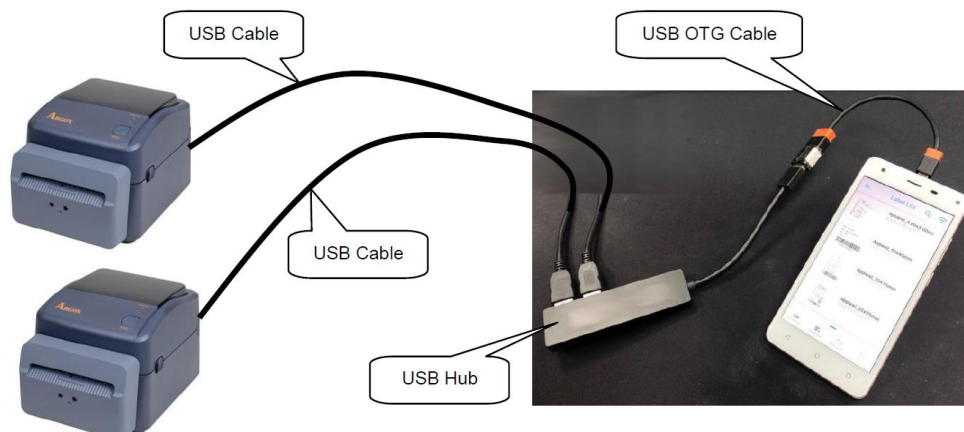
Drop down the menu button title area and change the connection mode to USB Connection.



When the item in the drop-down menu button is changed, the selected item name is displayed in the title area and the screen under the title bar is switch to the related screen. When you enter USB connection screen, the App will start to discover the USB device.



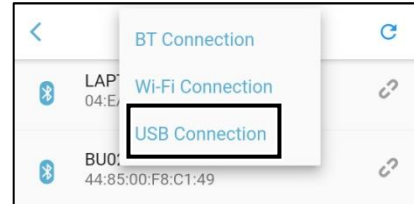
With USB hub, multiple printers can be connected to the USB hub, and you can select one of the printers to connect from the App.



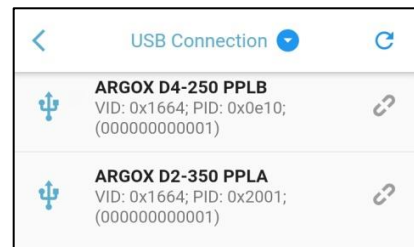
Press the connection button of the iLabelPrint App on the mobile device.



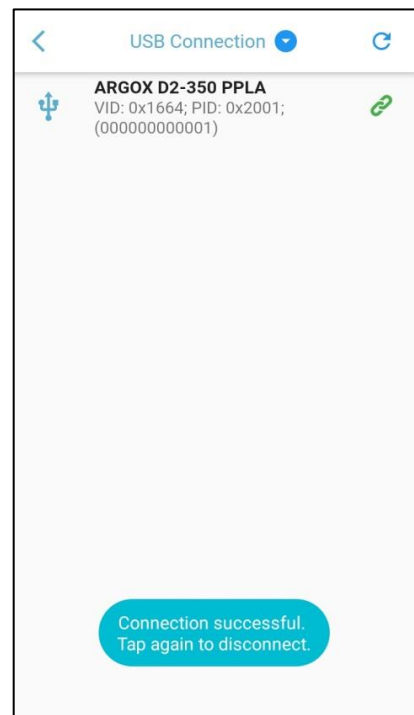
Drop down the menu button title area and change the connection mode to USB Connection.



When the item in the drop-down menu button is changed, the selected item name is displayed in the title area and the screen under the title bar is switch to the related screen. When you enter USB connection screen, the App will start to discover the USB device. Only 1 item in the list can be selected.

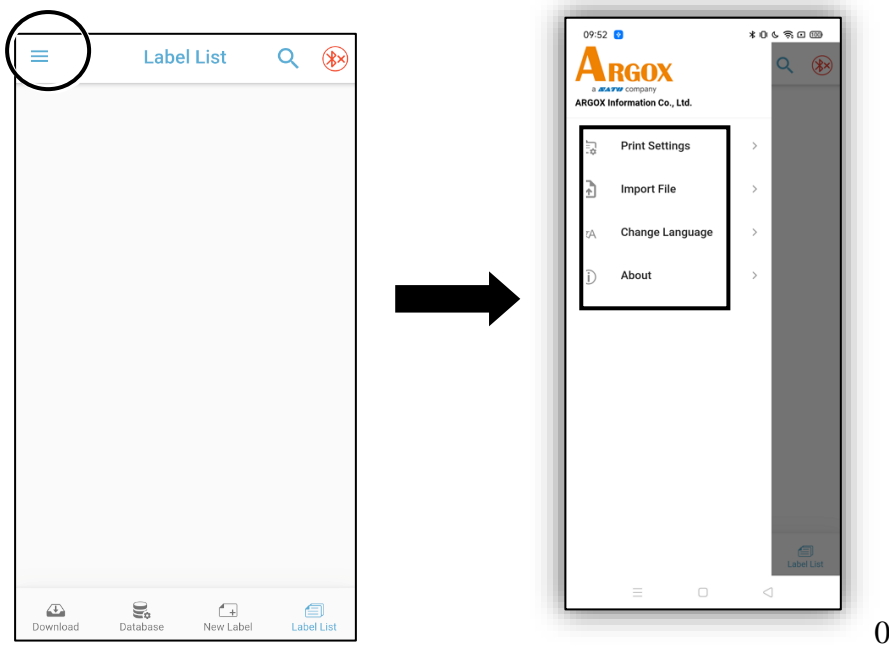


Press on the unconnected item to connect to the selected printer. The connection successful message is displayed near the bottom side of the screen when it is successful to connect to the selected printer. It will be hidden automatically after a while.



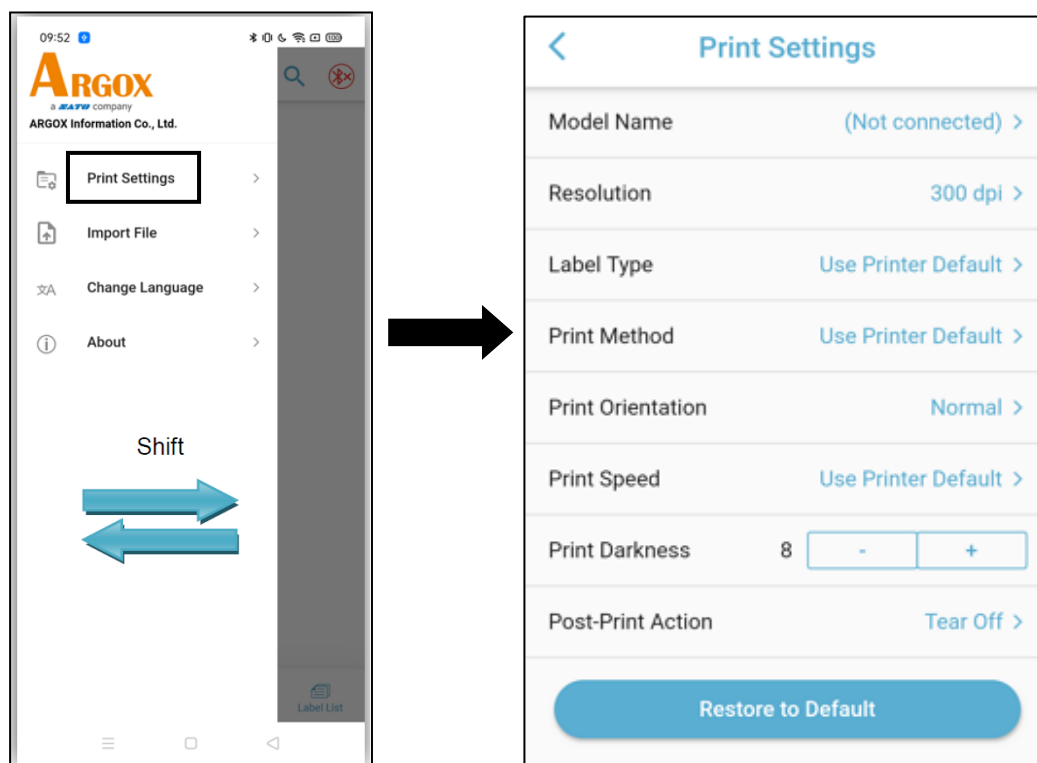
2.3 Setting up the iLabelPrint

When the settings menu button (☰) is tapped, the settings menu screen is shifted to the right side of the screen and the menu list is displayed. You will see **Print Settings**, **Import Files**, **Change Language**, and **About** on the settings menu of the App.



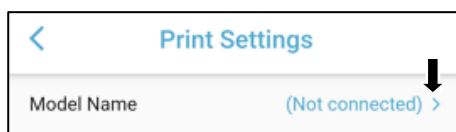
2.3.1 Print Settings

Tap **Print Settings** on the setting menu to change print method, print speed and the like.



➤ Model Name

You can tap the **Model Name** item to search for and connect a printer via Bluetooth, Wi-Fi, or USB (for Android).



After you finish connecting a printer, the model name of this connected printer will be shown in the column of **Model Name**.



For the detailed instruction on connection to a printer, refer to section 2.2 titling **Printer Connection**.

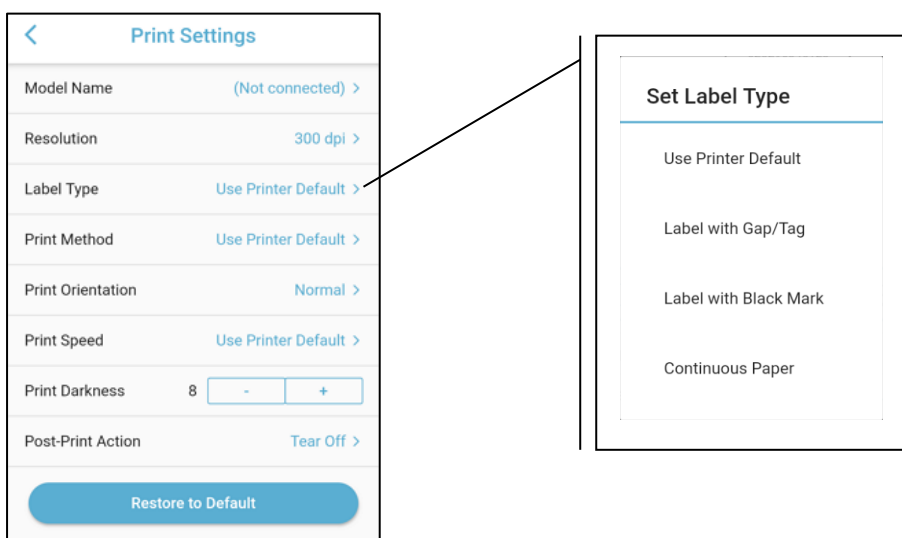
➤ Resolution

When the printer is not connected or is not in support list, you can set the printer resolution to 203 dpi (default) or 300 dpi; when the printer is connected and exists in the support list, the resolution value will be fixed and cannot be changed.



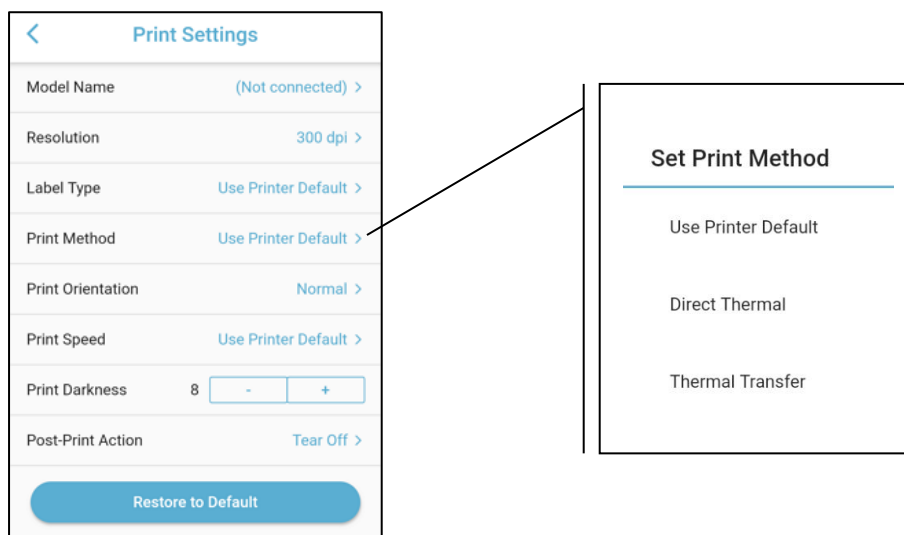
➤ Label Type

There are four options in the Label Type setting field, namely **User Printer Default**, **Label with Gap/Tag**, **Label with Black Mark**, and **Continuous Paper**.



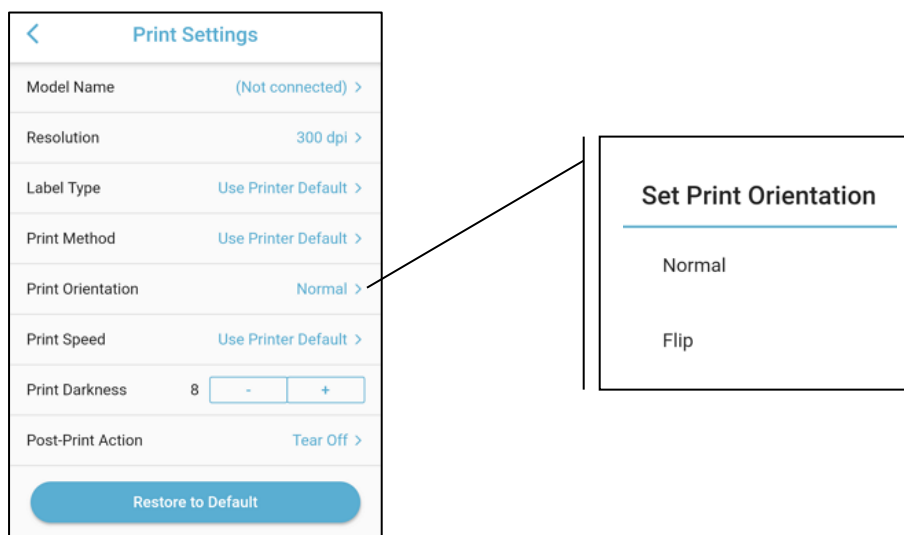
➤ Print Method

There are three options in the Print Method setting field, namely **User Printer Default**, **Direct Thermal**, and **Thermal Transfer**. When not connecting any printer, you can use **User Printer Default**, **Direct Thermal**, or **Thermal Transfer**. If selecting **Thermal Transfer**, you need to load a ribbon into the printer, while when selecting **Direct Thermal**, you do not need to load any ribbon into the print.



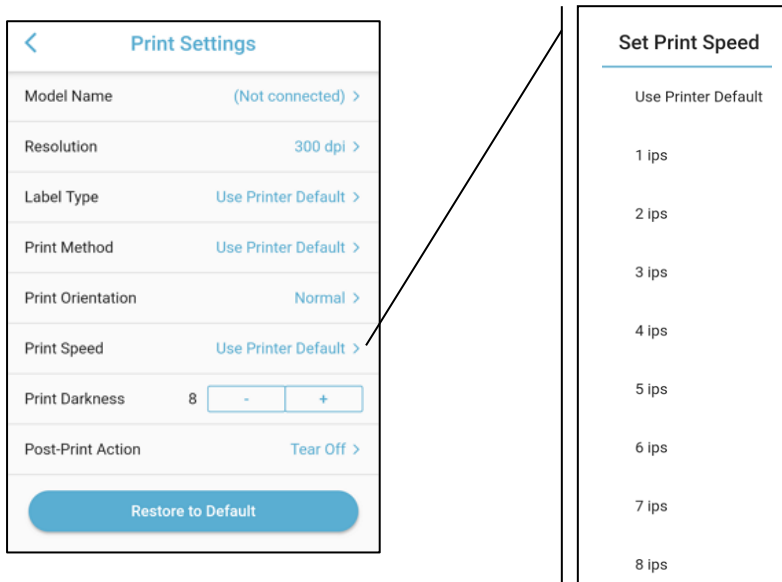
➤ Print Orientation

You can set the **Print Orientation** to **Normal** or **Flip**. **Normal** is the default. If flip is set, the printing image is rotated by 90 degrees.



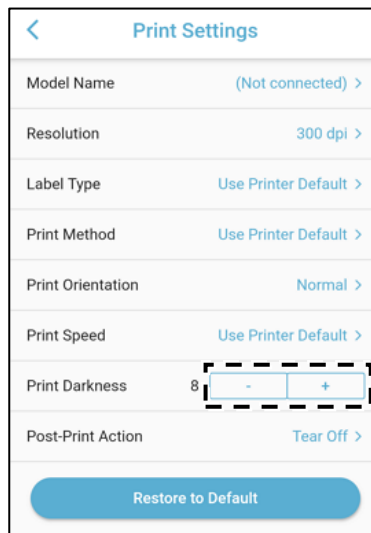
➤ **Print Speed**

This item is provided for you to set the print speed of your printer. When no printer is connected, you can set the print speed to the default print speed, 1 ips, 2 ips, 3 ips, 4 ips, 5 ips, 6 ips, 7 ips, or 8 ips; when a printer is connected, you can set the print speed to the default speed and a speed range from the min. print speed to the max. print speed configured in the printer.



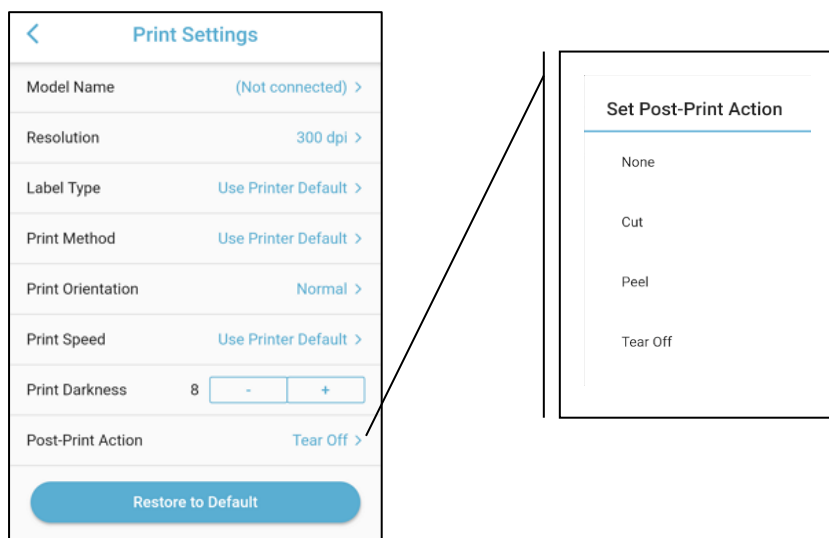
➤ **Print Darkness**

The print darkness ranges from 0 to 15 and the default darkness is set to 7. You can adjust the printing darkness by clicking the icons (). When the icon "+" is tapped, the darkness is increased; when the icon "-" is tapped, the darkness is decreased.

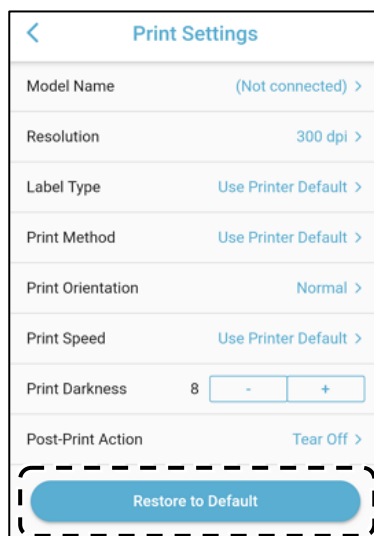


➤ Post-Print Action

You can set the Post-Print Action to **None**, **Cut**, **Peel**, or **Tear Off**. If you do not connect any printer, the default action, **None**, should be selected.

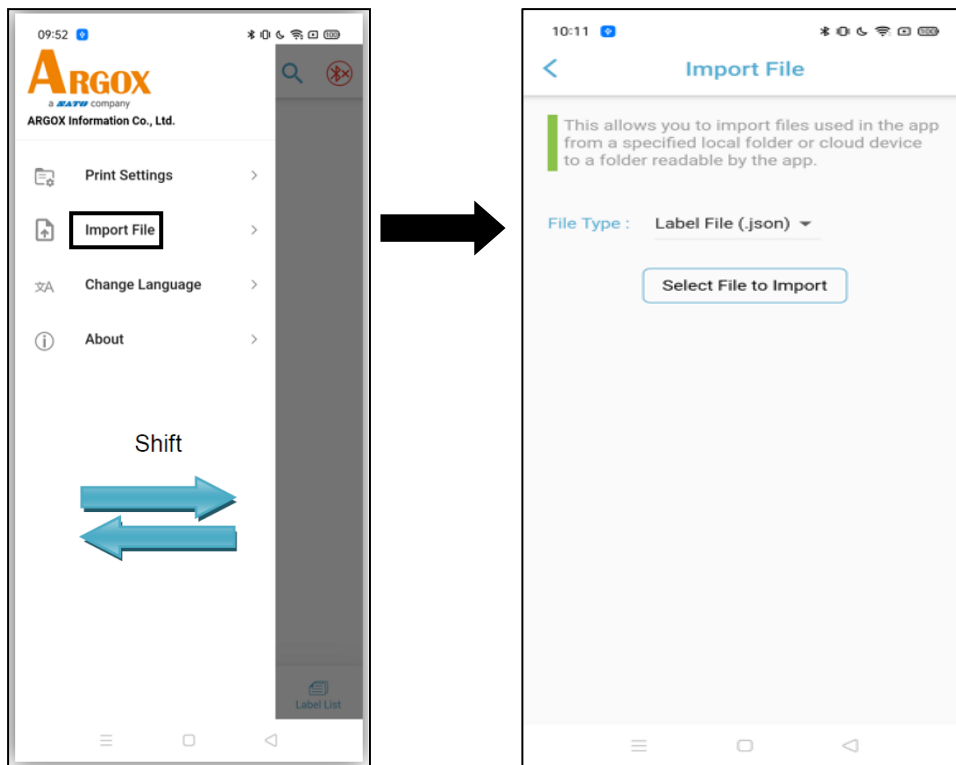


If you want to cancel all the settings you have done before, you can tap the button **Restore to Default** arranged below the **Print Settings** page to restore the setting values of the setting items to the default values.

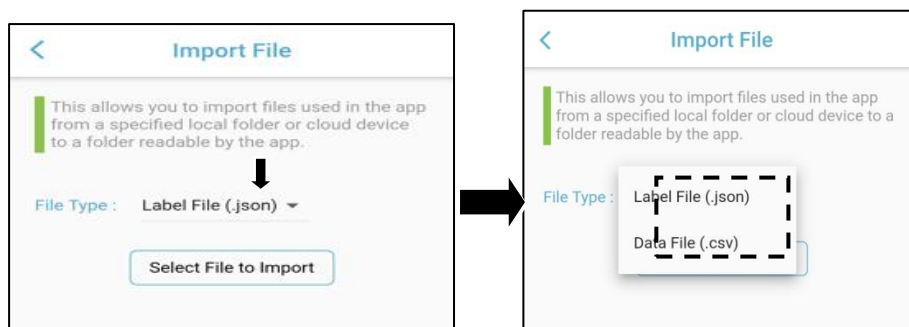


2.3.2 Import File

Tap **Import File** on the setting menu to import a file or files.



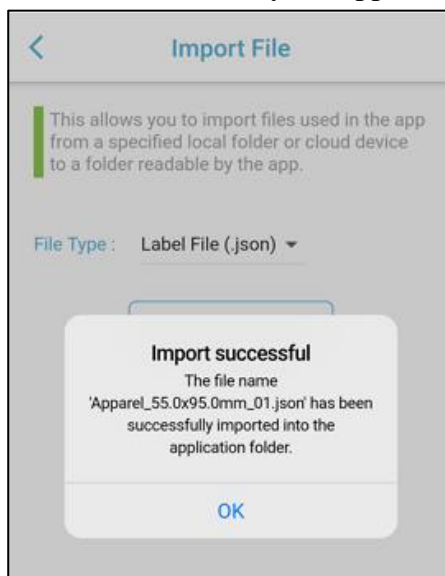
Tap the **File Type** drop-down menu to select a label file (.json) or a data file (.csv). This button will invoke the file browser of OS in order to select a file you want.



After selecting a file to be imported, tap the **Select File to Import** button to import the file.



When the file is successfully imported, you will see the screen below. The selected file is copied to the application folder that can be read by the application.



If you see an import failure screen, it is possible that the file you are trying to import is not in the correct format.

If the file to be imported already exists in the folder, you can choose to overwrite or rename the file, or cancel the process.



2.3.3 Change Language

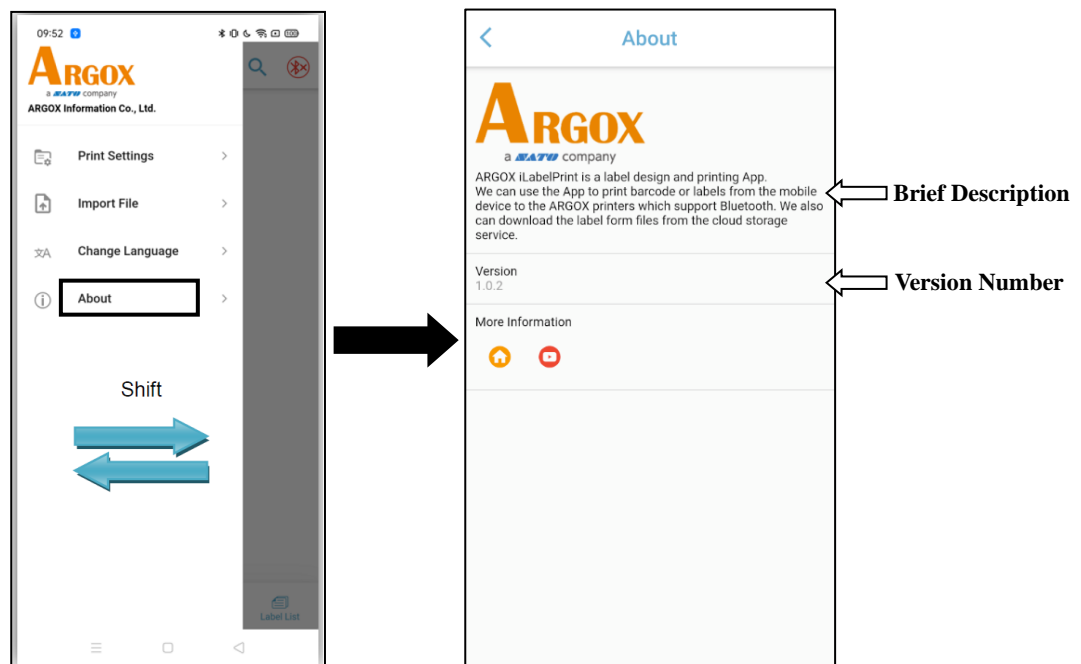
Through the **Change Language** setting menu, you can easily set the App's interface language to English (US), 繁體中文 (台灣), or 简体中文. The default language is based on the language set on your device.



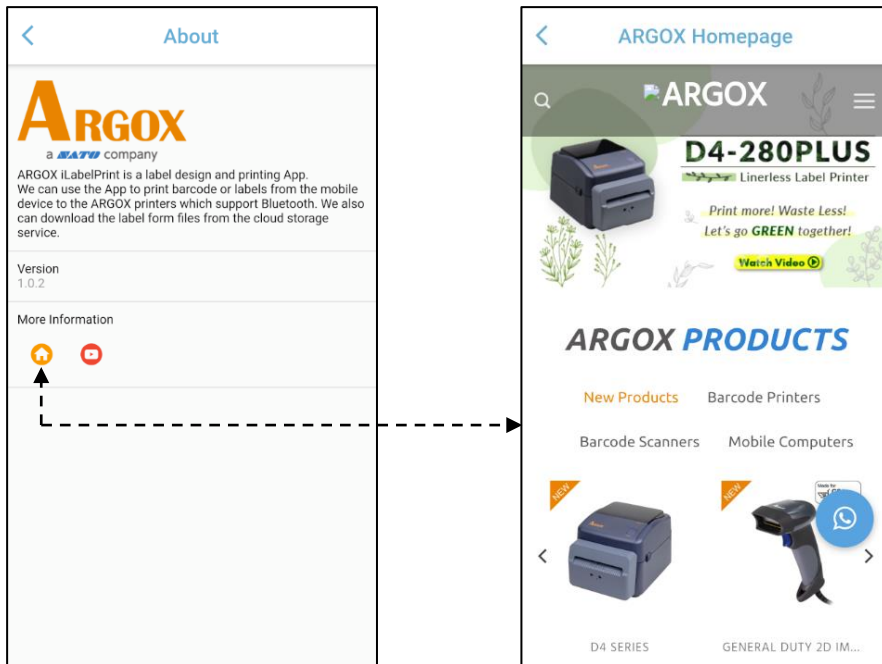
After you select and tap one of the languages, you will be led back to the Label List screen and the language of the App is changed at the same time without need to restart the App.

2.3.4 About

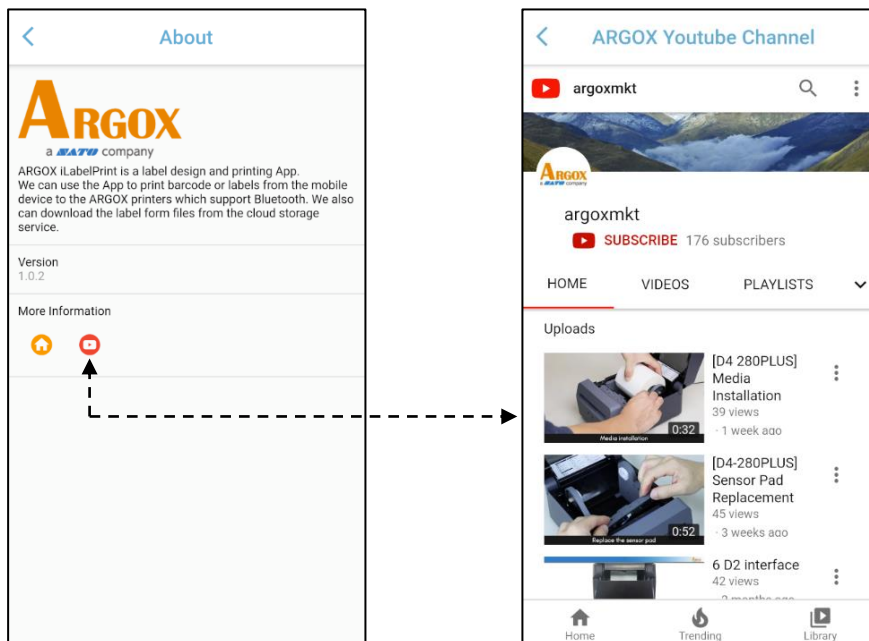
When tapping the **About** button, you will see a screen displaying the brief description and version number of the iLabelPrint App.



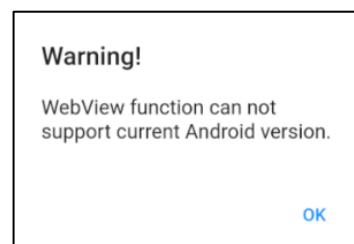
In the More Information field, there is a shortcut to the Argox home page. You can easily go to the Argox home page by clicking on the icon, as shown below.



Also, in the More Information field, there is a shortcut to the Argox Youtube channel. You can easily go to the Argox Youtube channel by clicking on the icon, as shown below.



Due to WebView function supports Android API 20 or later, it is recommended to view the homepage on Android 5 or later version. When this button is pressed and the Android version is not 5 or later, the warning message is displayed.

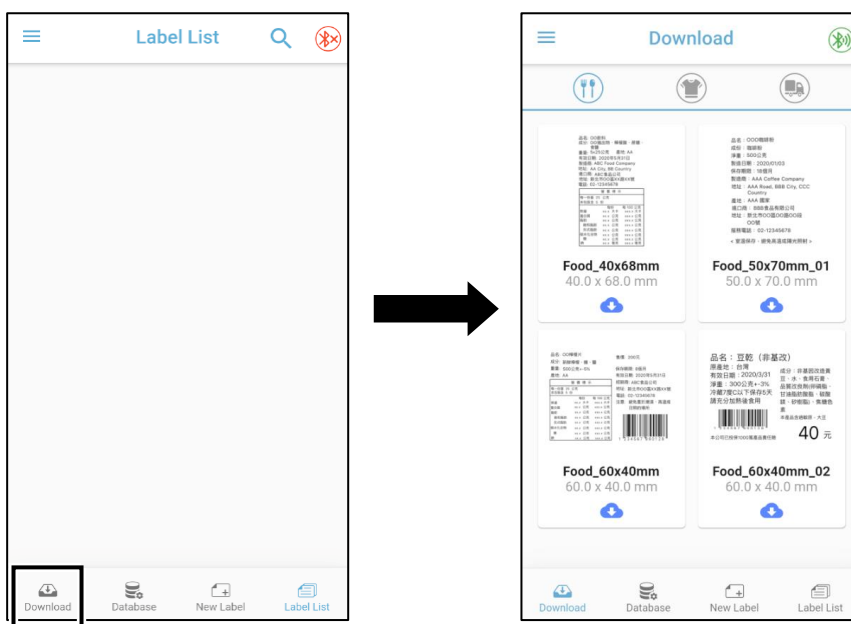


3. Designing Labels with iLabelPrint



This chapter will introduce how to download various label forms, set up a CSV database, and design and edit labels through the iLabelPrint App.

3.1 Download Label Form

First of all, tap the Download icon () on the main page of this App.



➤ **Food Label Form Sample**

Tap the food label icon () to enter the food label sample download page. On this page, you can select a food label sample you want to download, and just tap on the download button () to download the sample. Only one download button can be tapped at a time.

When you tap the download button, the selected label form will be downloaded to a specified path for the App in the mobile device directly and the information snackbar is displayed.



The information snackbar is dismissed automatically in a while.



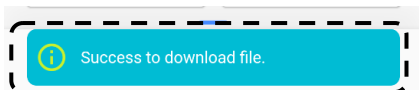
After you finish downloading the label sample, the sample is listed in the Label List page for further edit and use. The Label List function will be introduced as follows.



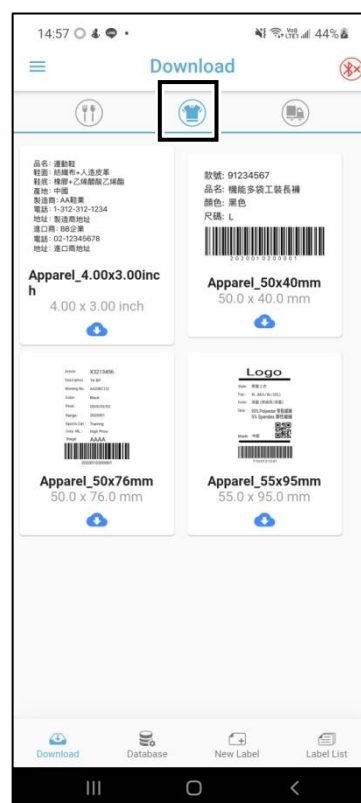
➤ Apparel Label Form Sample

Tap the apparel label icon (👕) to enter the apparel label sample download page. On this page, you can select an apparel label sample you want to download, and just tap on the download button (☁️) to download the sample. Only one download button can be tapped at a time.

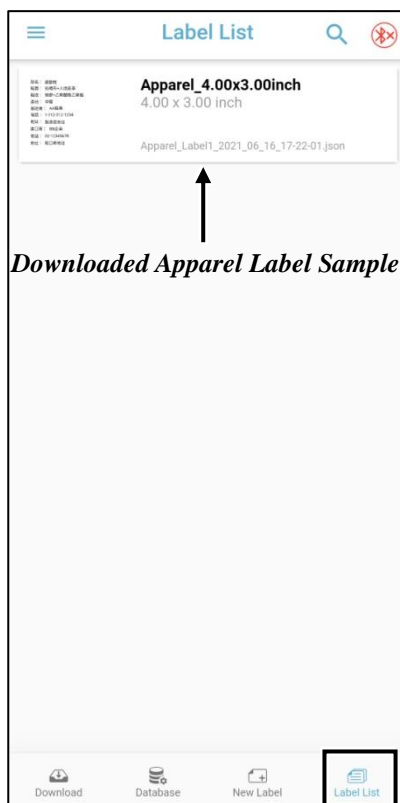
When you tap the download button, the selected label form will be downloaded to a specified path for the App in the mobile device directly and the information snackbar is displayed.





The information snackbar is dismissed automatically in a while.



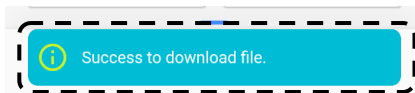
After you finish downloading the label sample, the sample is listed in the Label List page for further edit and use. The Label List function will be introduced as follows.



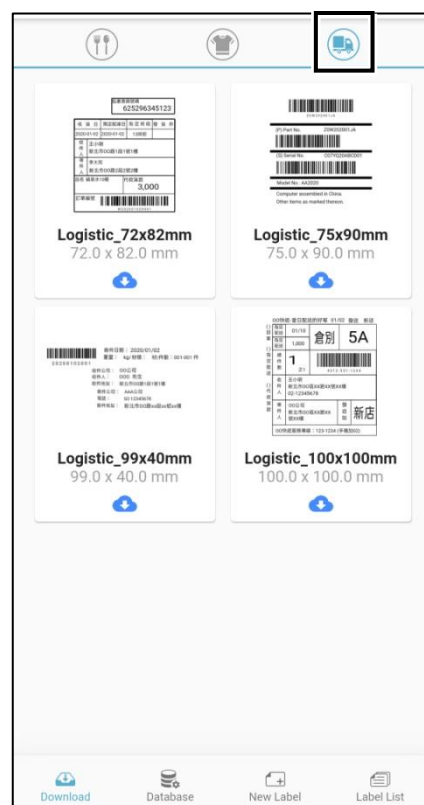
➤ Logistic Label Form Sample

Tap the logistic label icon () to enter the logistic label sample download page. On this page, you can select an logistic label sample you want to download, and just tap on the download button () to download the sample. Only one download button can be tapped at a time.

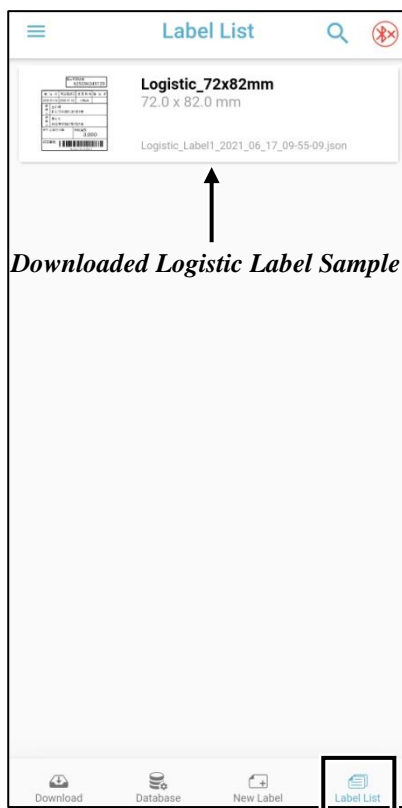
When you tap the download button, the selected label form will be downloaded to a specified path for the App in the mobile device directly and the information snackbar is displayed.



The information snackbar is dismissed automatically in a while.

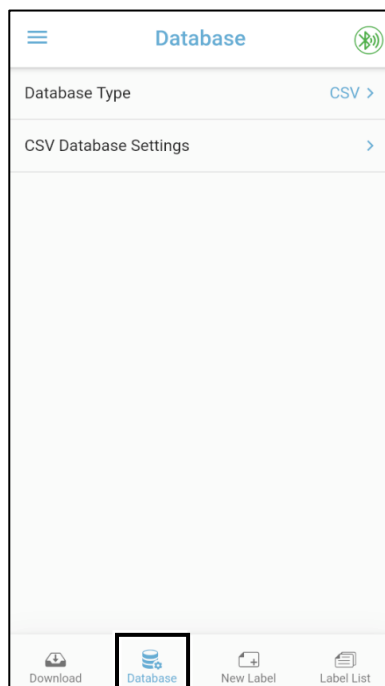


After you finish downloading the label sample, the sample is listed in the Label List page for further edit and use. The Label List function will be introduced as follows.



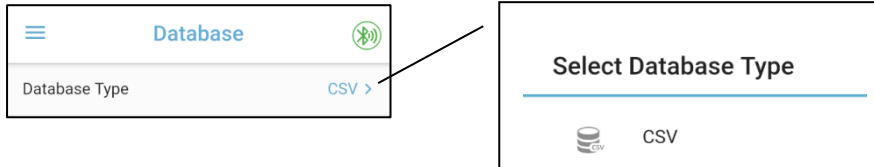
3.2 Database

The Database field is provided for you to select a database type and do the database settings.



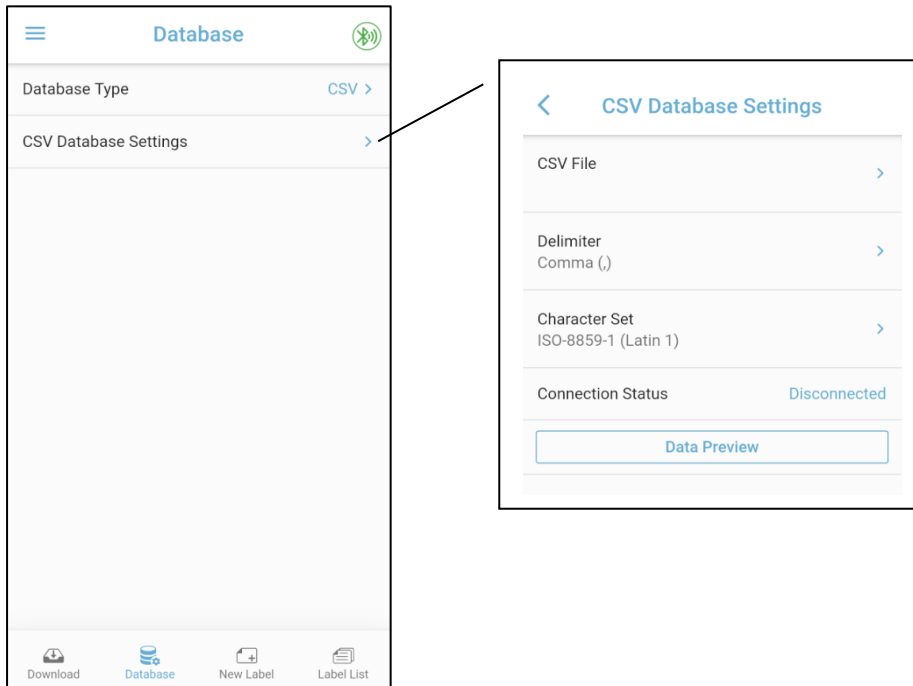
3.2.1 Database Type

When you tap " CSV >" that is displayed at the right side of the Database Type field, you will see the type dialog, as shown below. By tapping the text marked as "CSV" displayed below the Select Database Type field, you will connect a specified file saved in your mobile device.



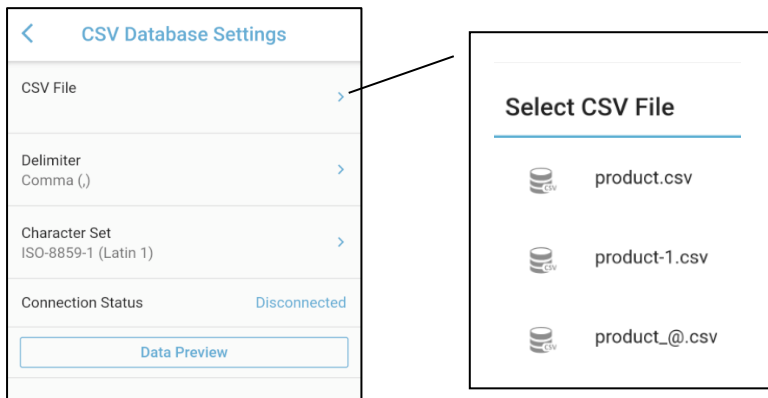
3.2.2 CSV Database Settings

When tapping the ">" icon that is displayed on the right side of the CSV Database Settings item, you will see 5 sub-items: *CSV File*, *Delimiter*, *Character Set*, *Connection Status*, and *Data Preview*.

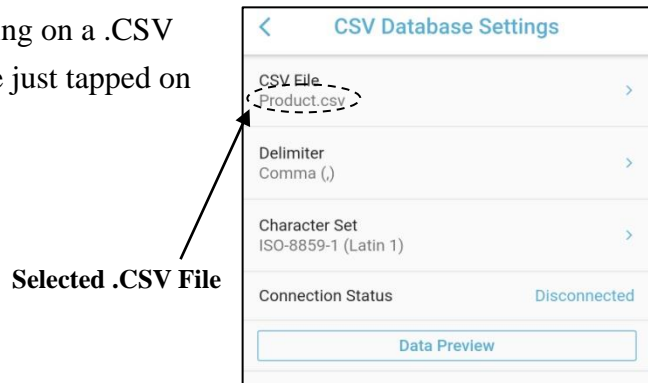


➤ CSV File

When tapping the ">" icon that is displayed on the right side of the CSV File item, you will see one or more CSV files for your selection.

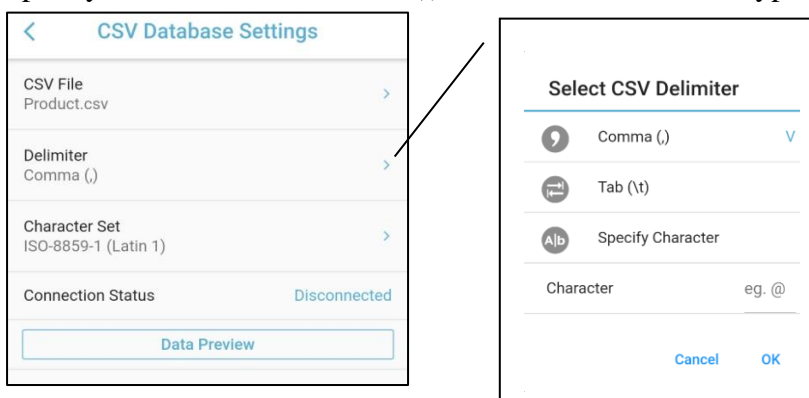


After you have finished selecting and tapping on a .CSV file, you will see the database file you have just tapped on appear below the **CSV File** field.



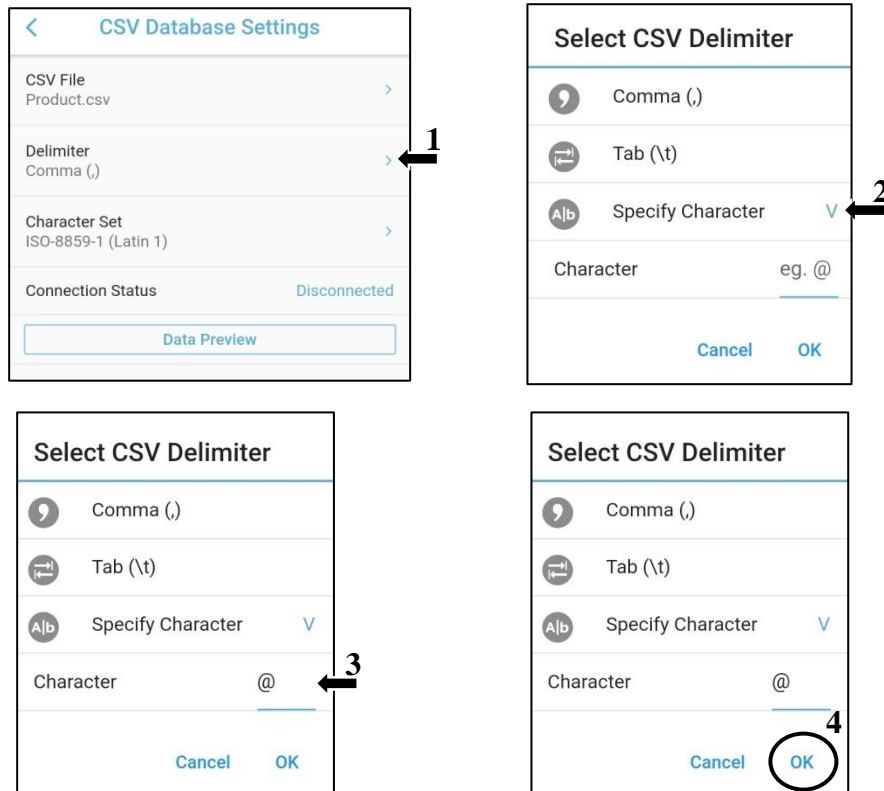
➤ Delimiter

When tapping the ">" icon that is displayed on the right side of the Delimiter item, you will see for 3 delimiter types for your selection. The delimiter types are Comma (,), Tab (\t), and Specify Character, and Comma (,) is the default delimiter type.

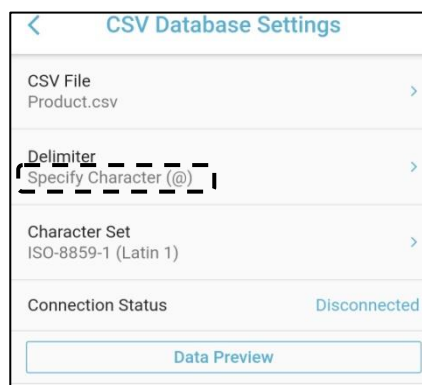


When the specify character type is selected, the character field is enabled and must be set; otherwise, the character field is disabled.

For example, firstly tap the **Delimiter** setting item, tap the **Specify Character** option, input a character in the field of **Character**, and finally tap **OK**.

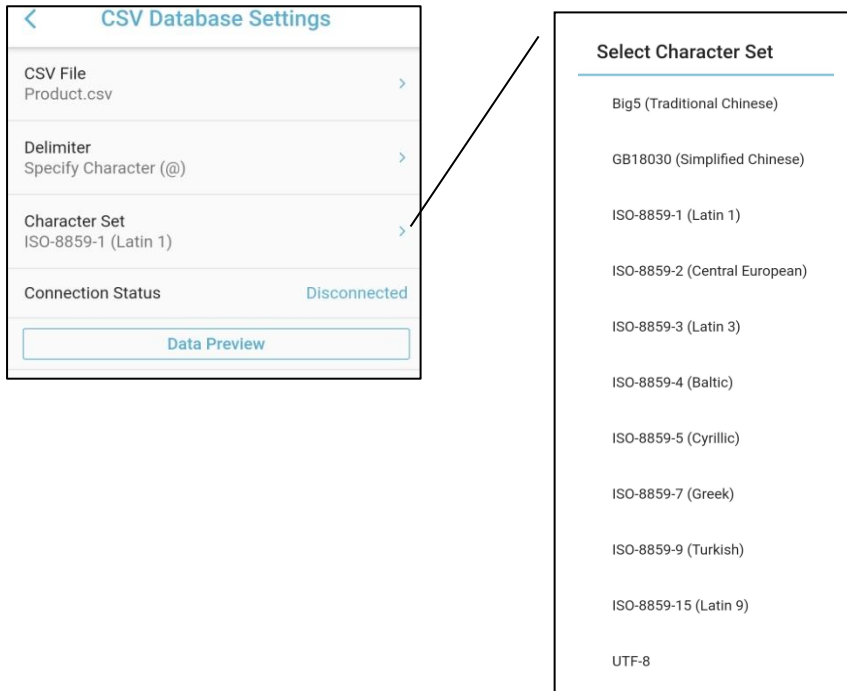


The selected delimiter type will then be saved and displayed in the delimiter field in CSV Database Settings screen, as shown in the figure below. Otherwise, tap “**Cancel**” to close the Select CSV Delimiter dialog keep unchanged the previously selected delimiter type.



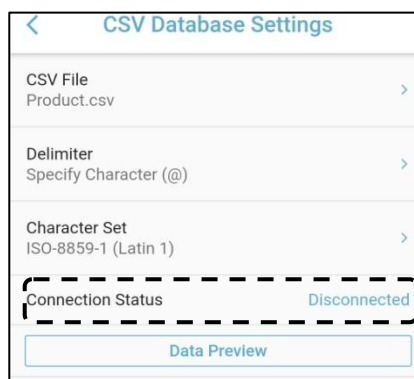
➤ Character Set

To display correct data and avoid unknown code, select the character set to match the character set of the CSV file. The character set of the file must be matched for Big5 (Traditional Chinese), GB18030 (Simplified Chinese), ISO-8859-1 (Latin 1), ISO-8859-2 (Central European), ISO-8859-3 (Latin 3), ISO-8859-4 (Baltic), ISO-8859-5 (Cyrillic), ISO-8859-7 (Greek), ISO-8859-8 (Hebrew), ISO-8859-9 (Turkish), ISO-8859-13 (Estonian), ISO-8859-15 (Latin 9), or UTF-8, and ISO-8859-1 (Latin 1) is the default.



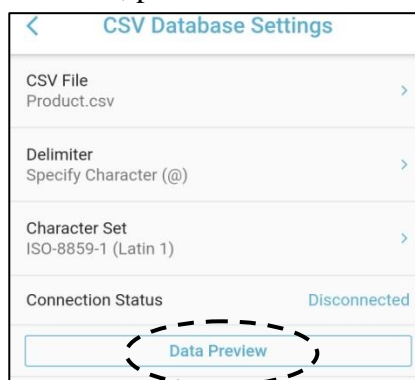
➤ Connection Status

The default connection status field shows *Disconnected*. Only after the data is previewed, the connection status field shows *Connected*.

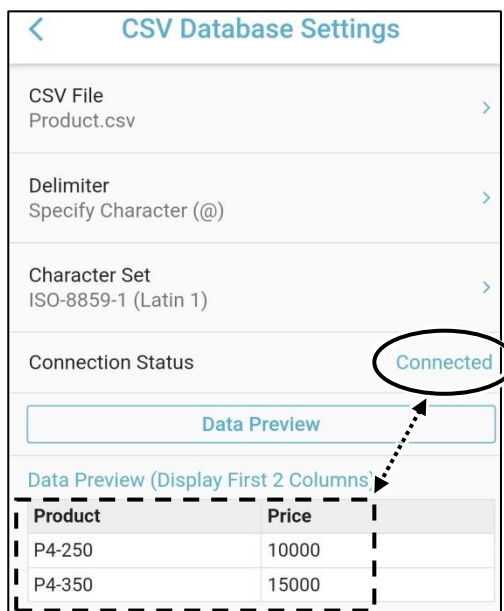


➤ Data Preview

To read the data from the imported file, press the **Data Preview** button.

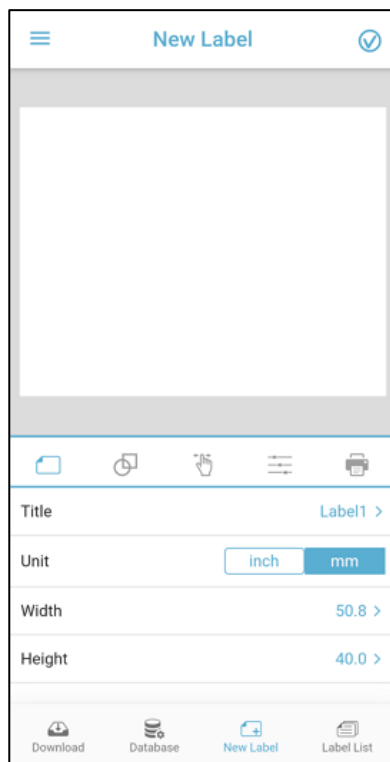


After pressing the **Data Preview** button, you will see the data imported, and the connection status field shows *Connected*.



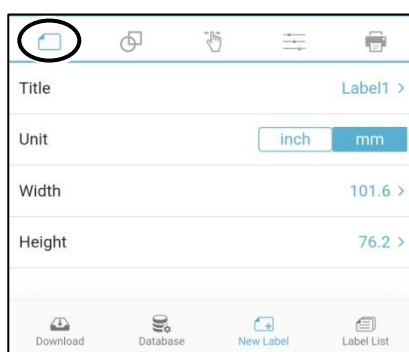
3.3 New Label

In the New Label screen, you can add object, modify object properties, etc. in the label design area. Please refer to the following sections for more details.



3.3.1 Label

You can edit the title and size of a label in the Label page in new label screen.



Title:

Text setting button is displayed on the right side of the setting item. When you tap the text setting button, the set label title dialog is displayed. The string is changed based on the setting values. The format is "(Setting Value) >", for example, "*Label1* >". After inputting the character string as setting value, tap **OK** to exit from the setting area. It is necessary to input data in title field. In this field, you can input 30 alphanumeric characters.

Unit:

When inch is selected, the value of width and height is converted from mm to inch, while when mm is selected, the value of width and height is converted from inch to mm.

Width:

Text setting button is displayed on the right side of the setting item. The string is changed based on the setting values. The format is "(Setting Value) >", for example, "72.0 >". After inputting the setting value, tap **OK** to exit from the setting area.

It is necessary to input data in title field.

When no printer is connected, the width can be set between 0.40 inch (10.2mm) and 6.00 inch (152.4mm). In the condition of maximum length, you can input 4 characters for inch width or 5 characters for metric width; thus, to design a new label, the default width value is 4 inch (101.6mm). To edit an existing label, you can design the label based on the label width.

When a printer is connected, the width can be set between 0.40 inch (10.2mm) and maximum inch (maximum width value x 25.4 for mm). In the condition of maximum length, you can input 4 characters for inch width or 5 characters for metric width; thus, to design a new label, the default width value is based on the default width of a label required for the connected printer. To edit an existing label, you can design the label based on the label width.

Height:

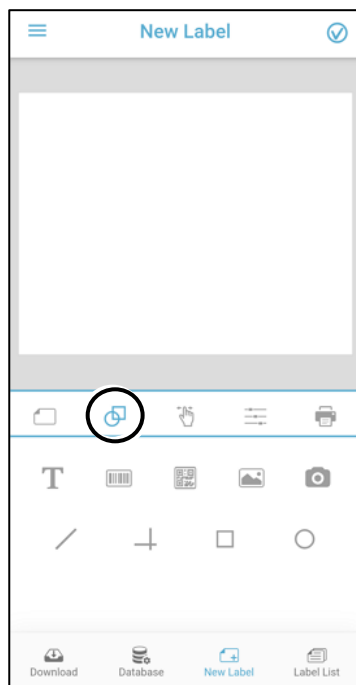
Text setting button is displayed on the right side of the setting item. The string is changed based on the setting values. The format is "(Setting Value) >", for example, "82.0 >". After inputting the setting value, tap **OK** to exit from the setting area.

It is necessary to input data in title field.

It supports label height between 0.40 inch (10.2mm) and 10.00 inch (254.0mm) for the UI display limitation.

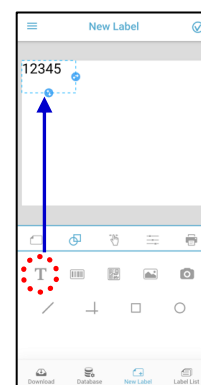
3.3.2 Object

You can add objects on the object page of a new label screen. The object will be added on a new layer in the label edit area. On the object page, you can add texts, 1D barcodes, 2D barcodes, downloaded images, camera-shot images, diagonal, lines, rectangles, and ellipses.




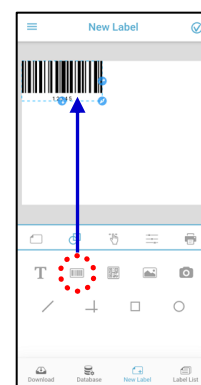
Text:

When tapping the text icon (**T**), you will see that a text object with default properties is added to the top-left corner of the label edit area.




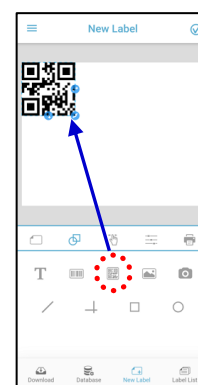
1D Barcode:

When tapping the 1D barcode icon (), you will see that a 1D barcode object with default properties is added to the top-left corner of the label edit area.




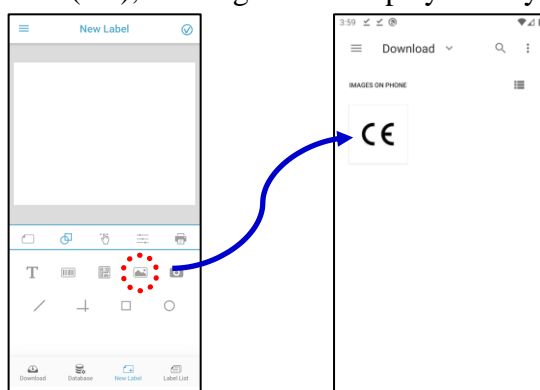
2D Barcode:

When tapping the 2D barcode icon (), you will see that a 2D barcode object with default properties is added to the top-left corner of the label edit area.




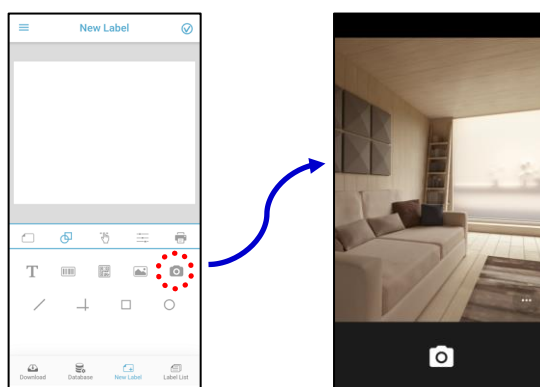
Downloaded Image:

When you tap the image icon (), an image list is displayed for you to select an image.



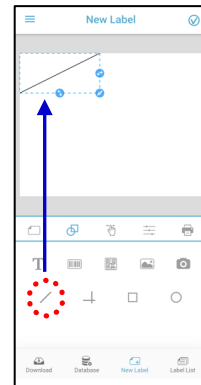
Camera-Shot Image:

When you tap the image icon (), the take picture button is displayed for you to take a picture.



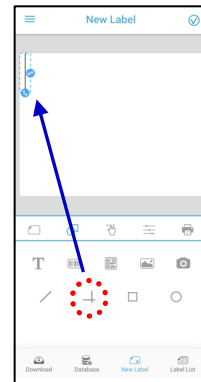
Diagonal:

When tapping the diagonal icon (↗), you will see that a diagonal object with default properties is added to the top-left corner of the label edit area.



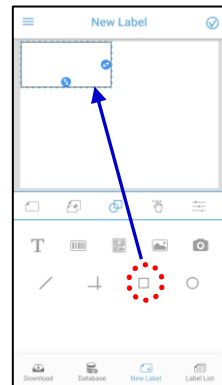
Line:

When tapping the line icon (—), you will see that a line object with default properties is added to the top-left corner of the label edit area.



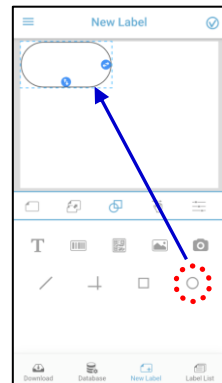
Rectangle:

When tapping the rectangle icon (□), you will see that a rectangle object with default properties is added to the top-left corner of the label edit area.



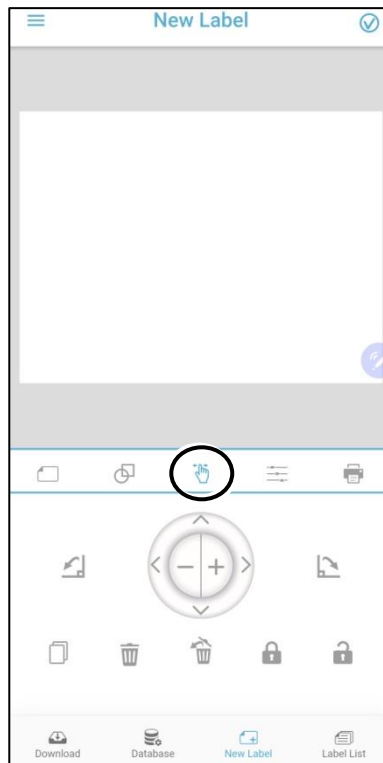
Ellipse:

When tapping the ellipse icon (○), you will see that an ellipse object with default properties is added to the top-left corner of the label edit area.




3.3.3 Operate


On this object operation page, you can easily operate objects by using the functions of rotation, movement, enlargement, reductions, clone, deletion, and lock.



Rotation:

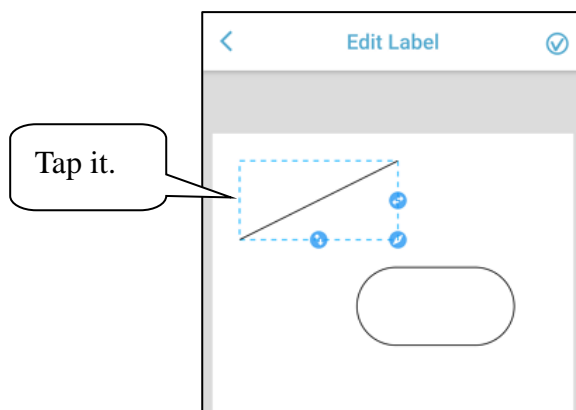


 When this counterclockwise 90-degree rotation button is pressed, an object you tapped is rotated once by 90 degrees counterclockwise.

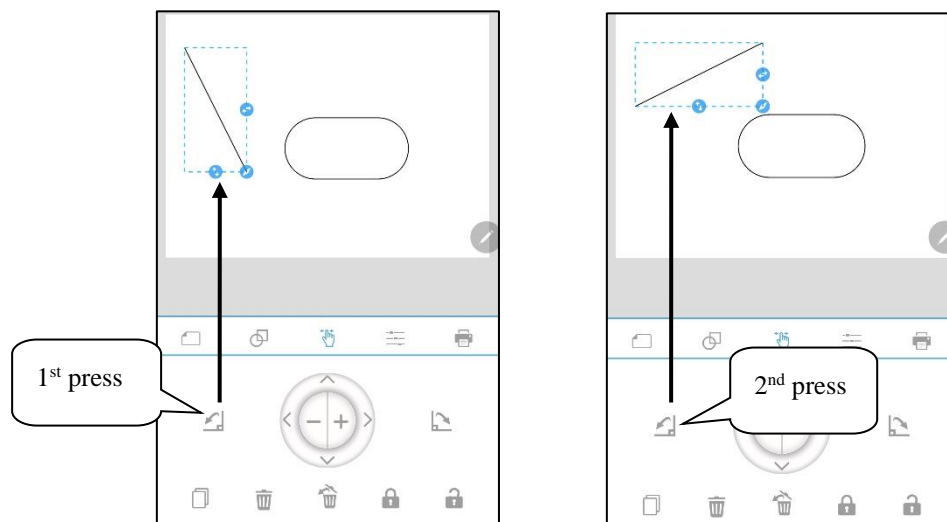
 When this clockwise 90-degree rotation button is pressed, an object you tapped is rotated once by 90 degrees clockwise.

Example of operation steps

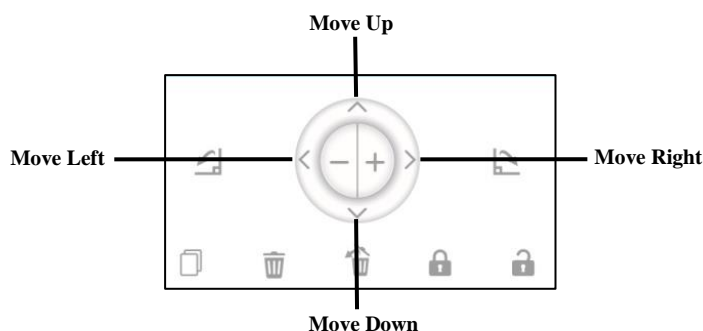
Step 1: Tap an object you want to rotate.



Step 2: Press the counterclockwise rotation button or the clockwise rotation button. Each time you press the button, the selected object rotates 90 degrees.



Movement:



When this button is pressed, the selected object is moved upward to the label edit area.

- ▲ When the button is pressed and hold, the selected object is moving upward continuously.

When this button is pressed, the selected object is moved downward to the label edit

- ▼ area. When the button is pressed and hold, the selected object is moving downward continuously.

When this button is pressed, the selected object is moved leftward to the label edit area.

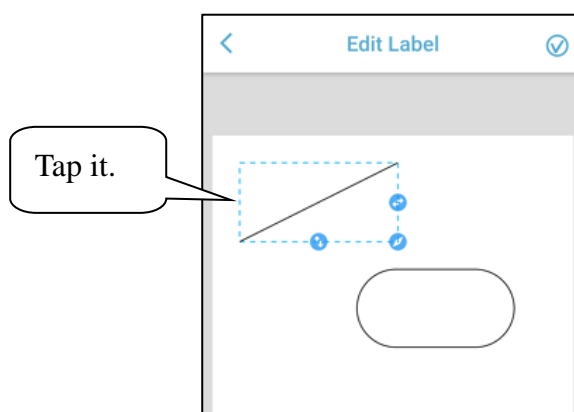
- ◀ When the button is pressed and hold, the selected object is moving leftward continuously.

When this button is pressed, the selected object is moved rightward to the label edit

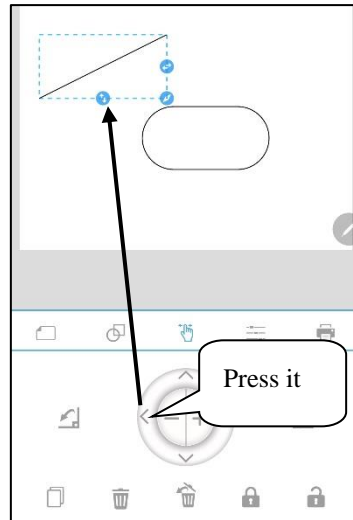
- ▶ area. When the button is pressed and hold, the selected object is moving rightward continuously.

✍ Example of operation steps

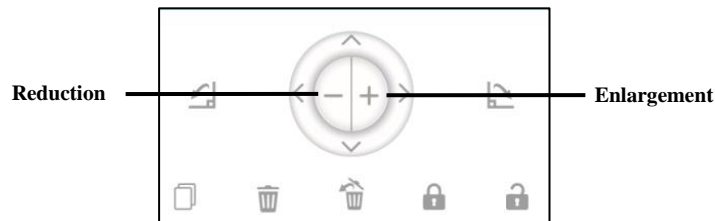
Step 1: Tap an object you want to move.



Step 2: Press one of the direction buttons, for example, left button, to make the object move leftward. Each time you press the button, the selected object moves leftward a step.



Enlargement / Reduction:

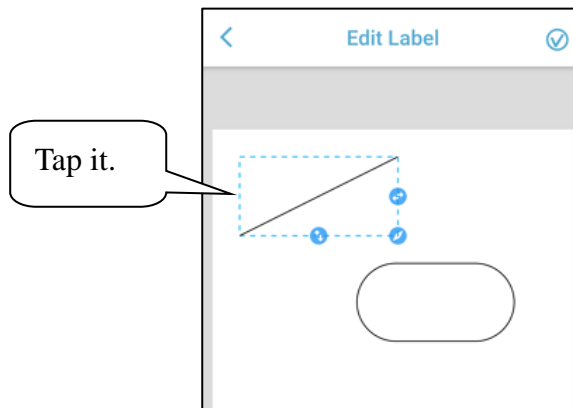


+ When this button is pressed, the size of the selected object is enlarged. When the button is pressed and hold, the size of the selected object is enlarged continuously. The object size is scaled in proportional.

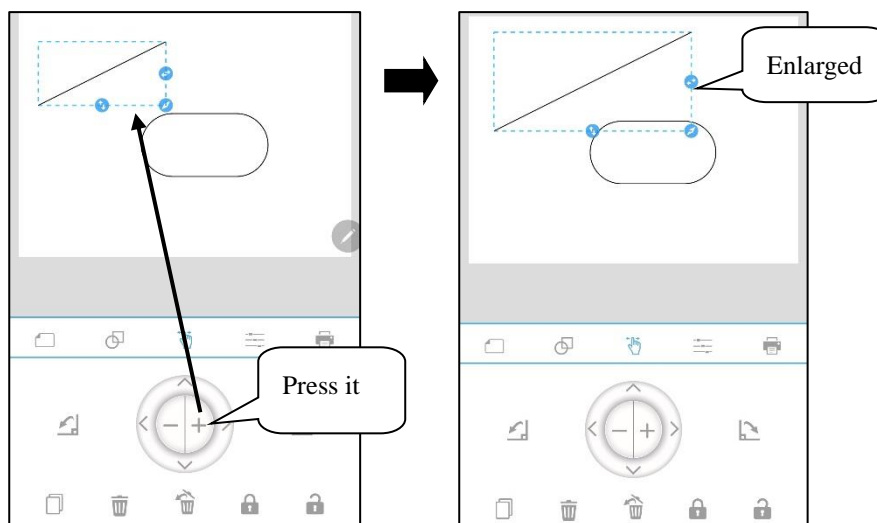
- When this button is pressed, the size of the selected object is reduced. When the button is pressed and hold, the size of the selected object is reduced continuously. The object size is scaled in proportional.

✍ Example of operation steps

Step 1: Tap an object you want to enlarge or reduce.




Step 2: Press one of the, for example, enlargement button, to enlarge the object. Each time you press the button, the selected object is enlarged a bit.



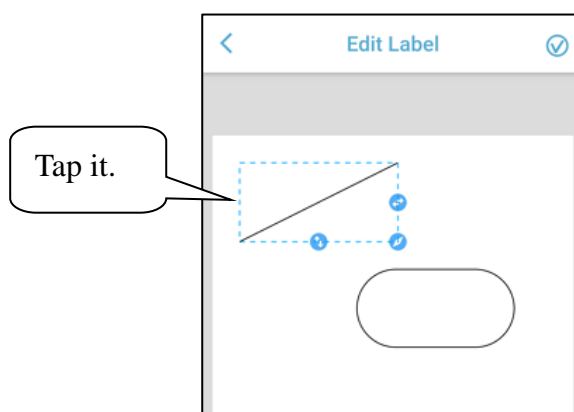
Clone:



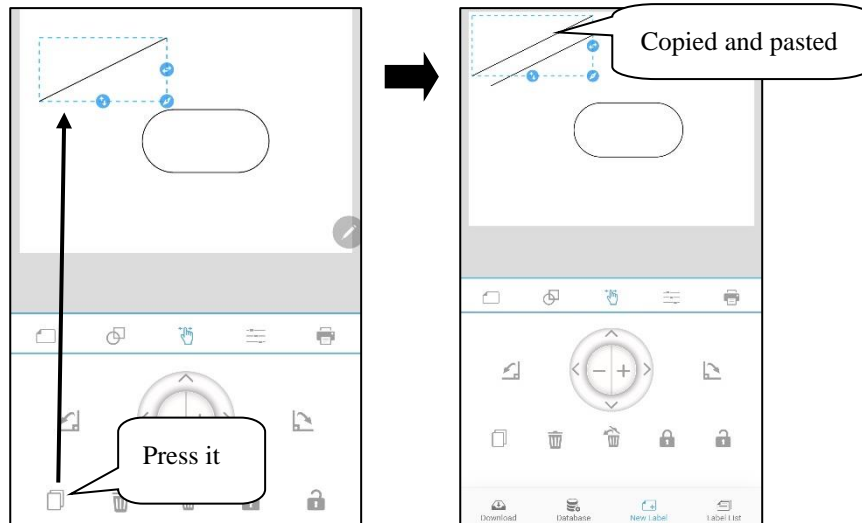
 When this button is pressed, the selected object is copied and pasted to the label edit area.

Example of operation steps

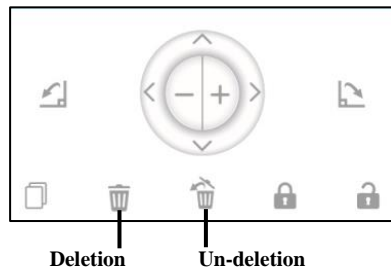
Step 1: Tap an object you want to clone.





Step 2: Press the clone button to copy and paste the object. Each time you press the button, the selected object is copied and pasted once.



Deletion / Un-deletion:

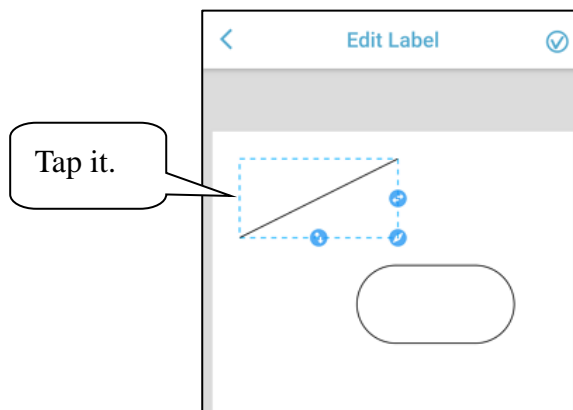


-  When this button is pressed, the selected object is deleted.
-  When this button is pressed, the latest deleted object is undeleted. Only one object can be undeleted.

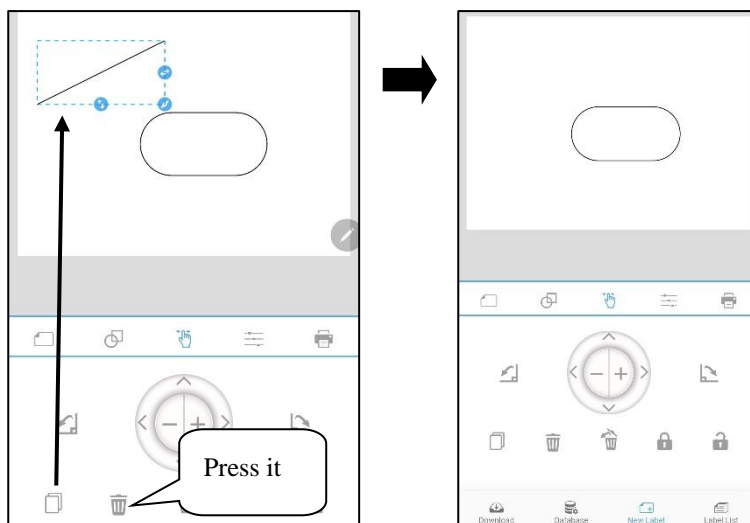
***✍* Example of operation steps**

Deletion

Step 1: Tap an object you want to delete.

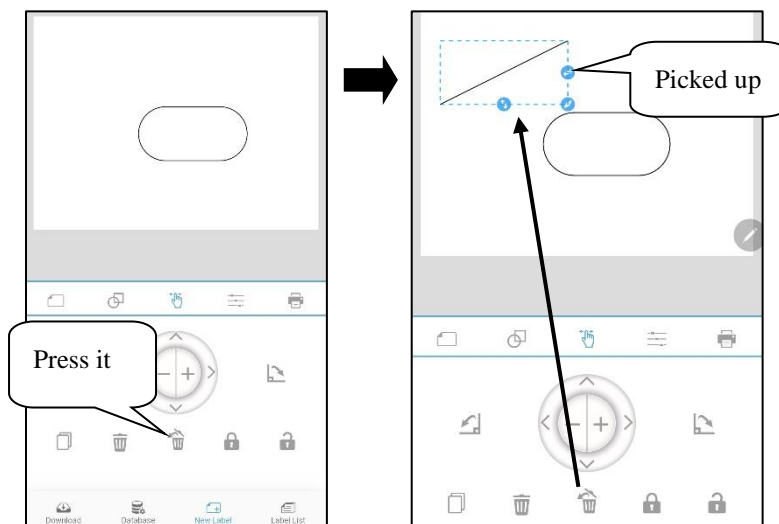


Step 2: Press the deletion button to delete the selected object.

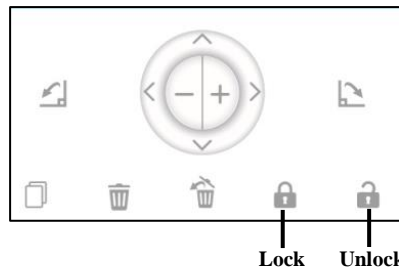


Un-deletion

Step 1: Press the Un-deletion button to pick up the latest deleted object.



Lock / Unlock:

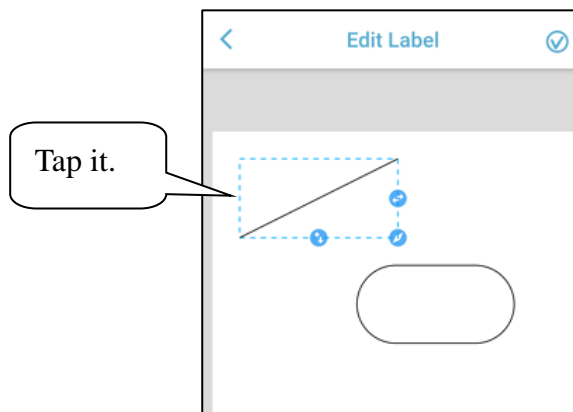


- When this button is pressed, the selected object is locked.
- When this button is pressed, the selected and locked object is unlocked. Only one object can be undeleted.

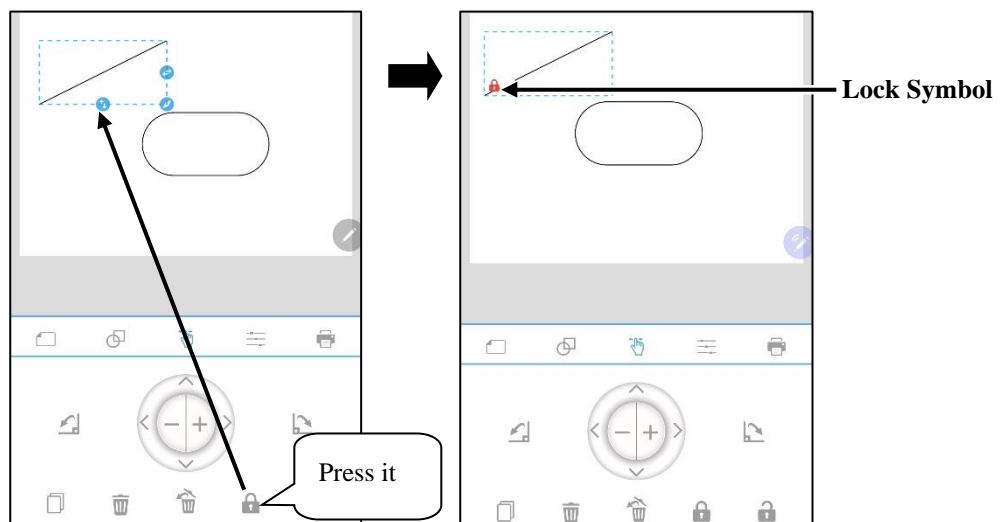
Example of operation steps

Lock

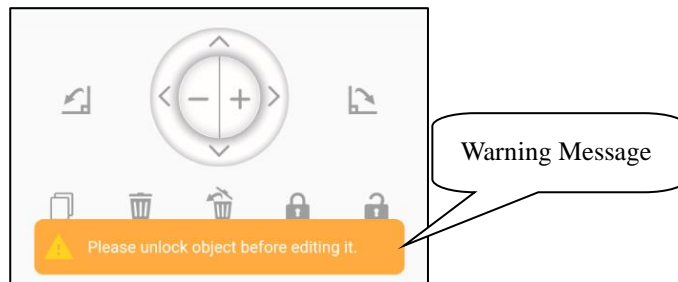
Step 1: Tap an object you want to lock.



Step 2: Press the lock button to lock the selected object. After locking it, you will see a lock symbol on the locked object.

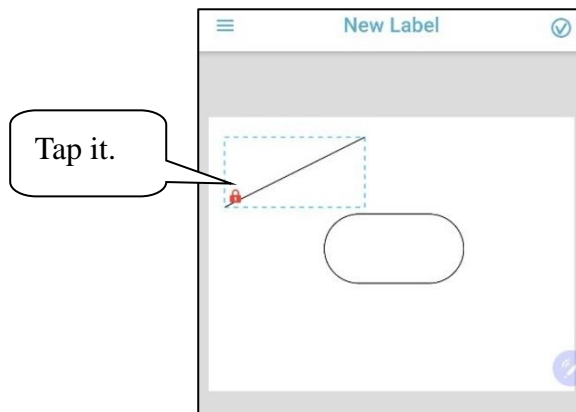


When the other operation (Rotate CCW, Rotate CW, Reduce, Enlarge, Move Up, Move Left, Move Right, Move Down, Clone, Delete or Undelete) is applied to the locked object, the information snackbar is displayed on the bottom side of the screen, as shown below.

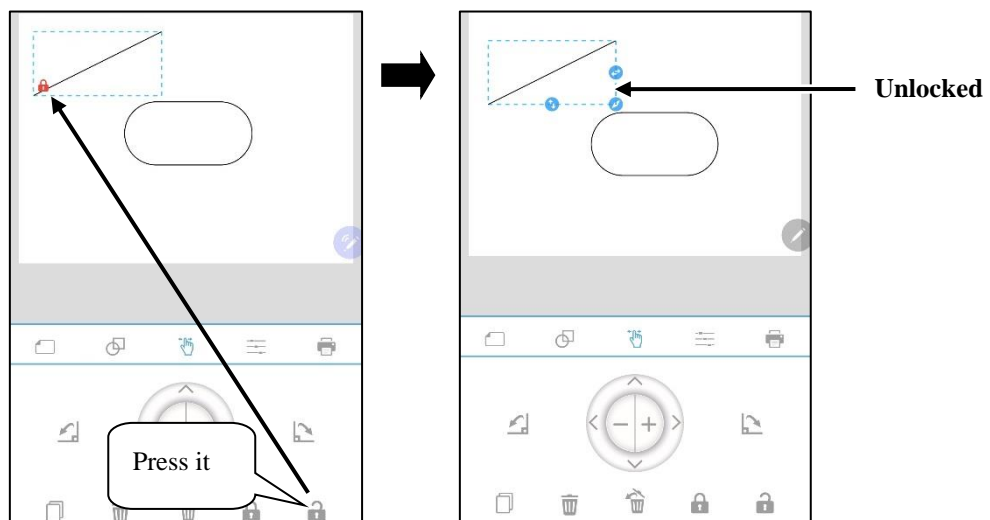


Unlock

Step 1: Tap an object you want to lock.

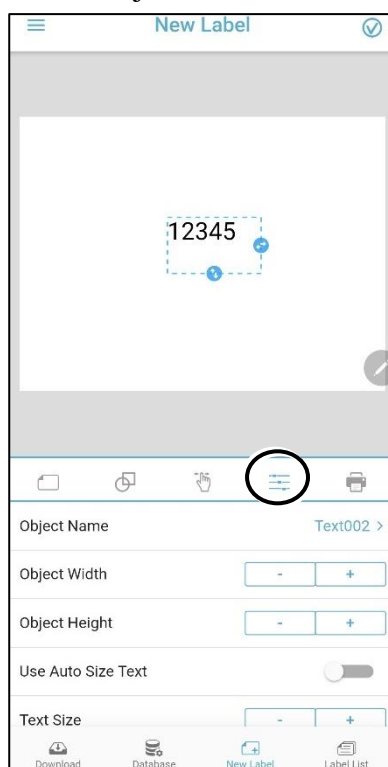


Step 2: Press the unlock button to unlock the selected object. After unlocking it, you will see a lock symbol disappear from the selected object.



3.3.4 Properties

On this object properties setting page, you can set the relevant properties for various objects. The properties that can be set for each object will be listed below.



➤ Text

- Object Name: to distinguish each object, which can be changed by user
- Object Width: to adjust the width of the selected object
- Object Height: to adjust the height of the selected object
- Use Auto Size Text: to make the scaled text fit the object area automatically when the setting is on.
- Text Size: to adjust the size of the selected text when the Use Auto Size Text is set to off
- Data Source: to set the data source of the selected object to *Fixed*, *Date and Time*, *Counter*, *Database*, or *When Print*
- Text: to set the text string of the selected text object. The string is changed based on the setting values. The format is "(Setting Value) >", for example: "12345 >".

➤ **Barcode**

- Object Name: to distinguish each object, which can be changed by user
- Object Width: to adjust the width of the selected object
- Object Height: to adjust the height of the selected object
- Barcode Type: to set the barcode type of the barcode object. The priority of barcode type setting is higher than data source setting.
- Human Readable: to display or hide the human readable string of the barcode object
- Human Readable Size: to adjust the human readable size. The human readable size of the object in the label edit area will be changed at the same time when the decrease or increase button is pressed.
- Data Source: to set the data source of the selected object to *Fixed, Date and Time, Counter, Database, or When Print*
- Text: to set the text string of the selected text object. The string is changed based on the setting values. The format is "(Setting Value) >", for example: "12345 >".

➤ **2D Barcode**

- Object Name: to distinguish each object, which can be changed by user
- Object Width: to adjust the width of the selected object
- Object Height: to adjust the height of the selected object
- Barcode Type: to set the barcode type of the barcode object. The priority of barcode type setting is higher than data source setting.
- Error Correction: to set the error correction of the 2D barcode object. Text setting button is displayed on the right side of the setting item. The string is changed based on the setting values.
- Data Source: to set the data source of the selected object to *Fixed, Date and Time, Counter, Database, or When Print*
- Text: to set the text string of the selected text object. The string is changed based on the setting values. The format is "(Setting Value) >", for example: "12345 >".

➤ **Image**

- Object Width: to adjust the width of the selected object
- Object Height: to adjust the height of the selected object

➤ **Diagonal**

- Object Width: to adjust the width of the selected object
- Object Height: to adjust the height of the selected object
- Thickness: to adjust the thickness of the line of the selected object

➤ **Line**

- Object Width: to adjust the width of the selected object
- Object Height: to adjust the height of the selected object
- Thickness: to adjust the thickness of the line of the selected object

➤ **Rectangle**


- Object Width: to adjust the width of the selected object
- Object Height: to adjust the height of the selected object
- Thickness: to adjust the thickness of the line of the selected object

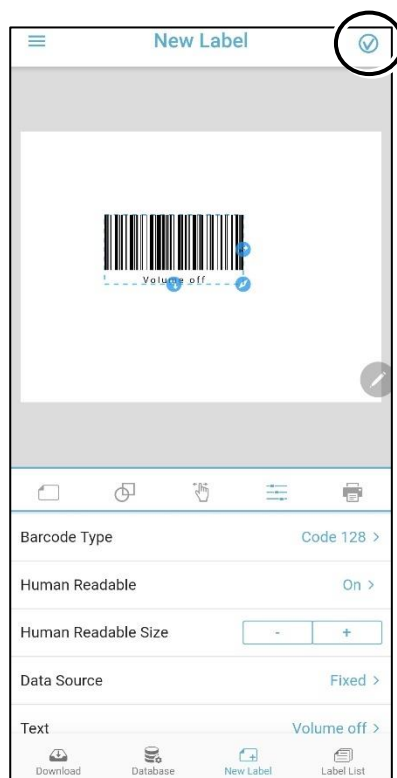
➤ **Ellipse**

- Object Width: to adjust the width of the selected object
- Object Height: to adjust the height of the selected object
- Thickness: to adjust the thickness of the line of the selected object

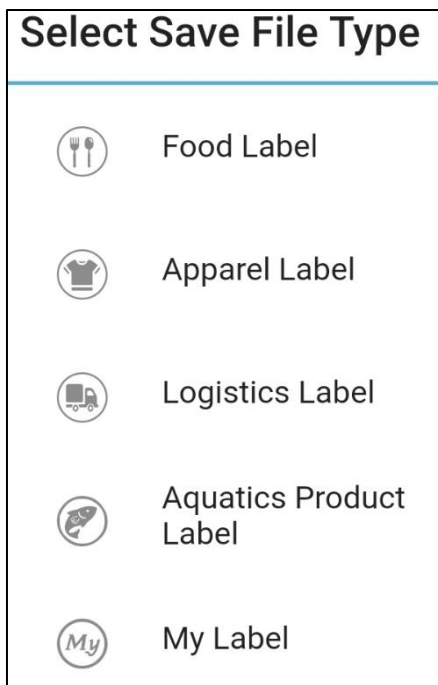
3.3.5 Save Label

When you are done editing labels, you can save them in the database so that you can edit the labels at any time in the future. The following is a brief description of how to save the completed edited labels to the database.

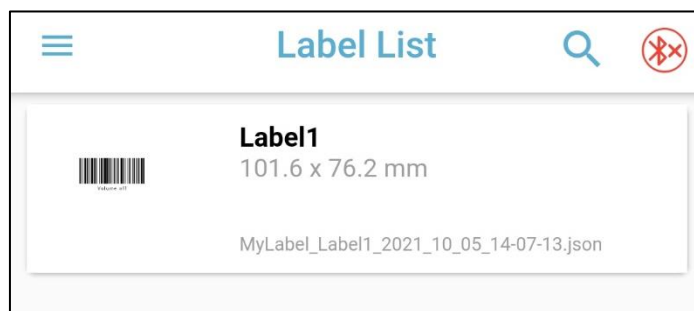
1. After you have finished editing the label, tap the save icon  in the upper right corner of the editing page.



- When save button is clicked, the select save file type dialog is displayed. There are 6 items in the select save file type dialog, including: Food Label, Apparel Label, Logistic Label, Aquatics Product Label and My Label. Before saving the label, select one of the file types.



- After you save the edited label, it will appear on the Label List page, as shown in the following figure. There is no message after saving the file.



3.3.6 Print Label

On this print label page, you can print copies of labels through a connected printer.



- **Copies:** to adjust the copies by pressing one of the buttons. The number of copies ranges from 1 to 999, and the default number of the copies is 1.
- **Print:** to send the data to a connected printer to print. If any printer is not connected and the print button on this APP is pressed, the warning message is displayed on the bottom side of the screen and the printing data is not set to the printer.

3.3.7 Share, Edit, and Print from Label List

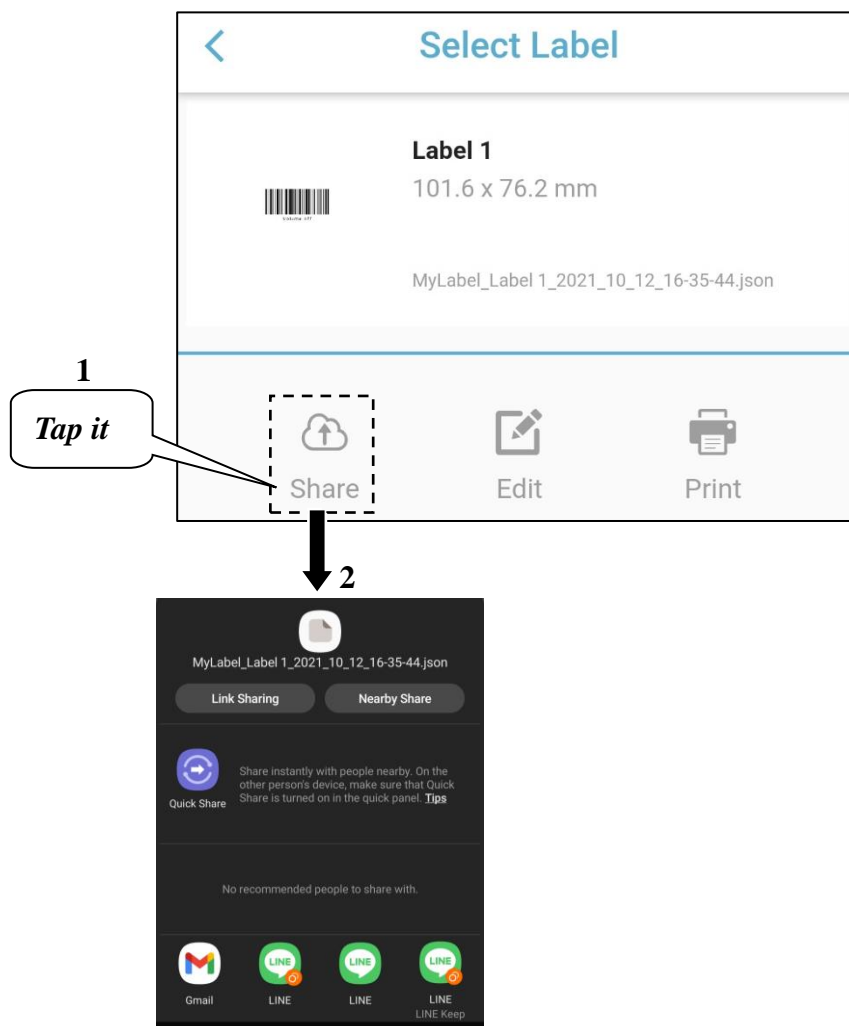
After you finish editing the labels, you can easily share, re-edit, and print the edited labels from the Label List page. The following is a brief description of how to share, re-edit, and print the labels.

➤ Share

1. Tap on the area of the dotted box on the Label List page.



2. (1) Tap the **Share** button. (2) Next, select a specific app to share the edited label through the selected app.

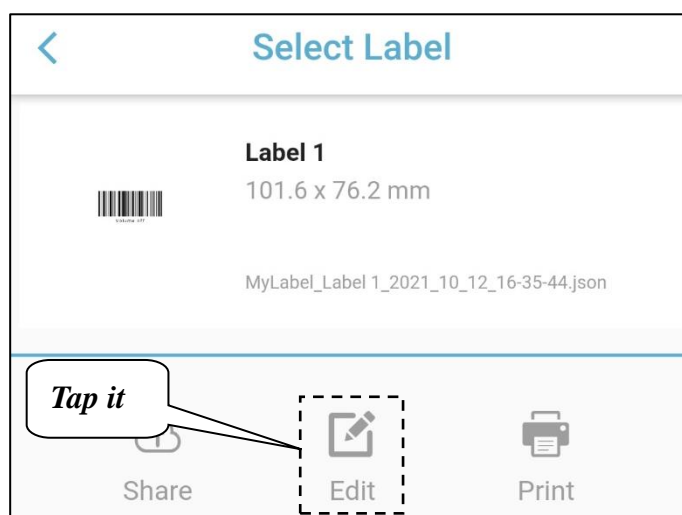


➤ **Edit**

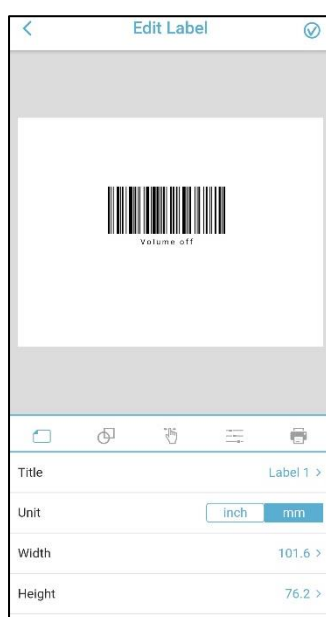
1. Tap on the area of the dotted box on the Label List page.



2. Tap the **Edit** button.

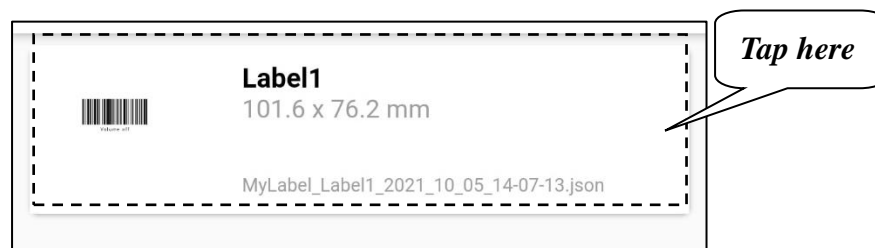


3. You are led to enter the Edit Label page. After re-editing the label, remember to save it.

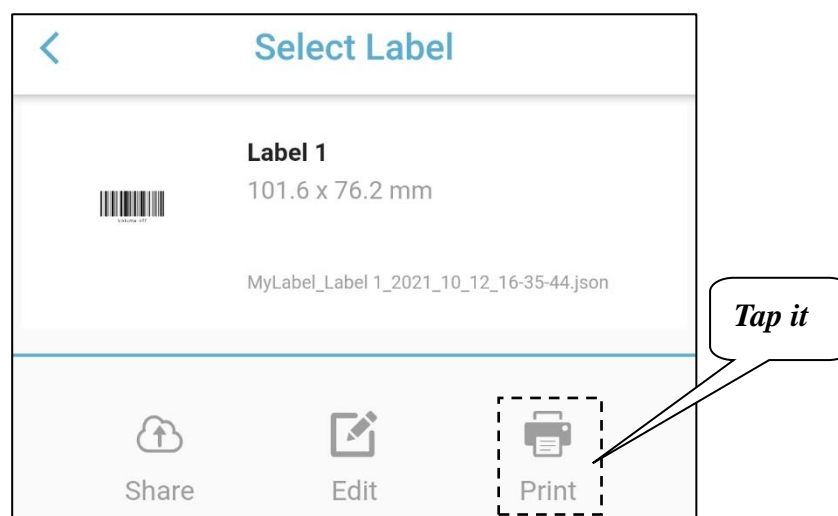


➤ **Print**

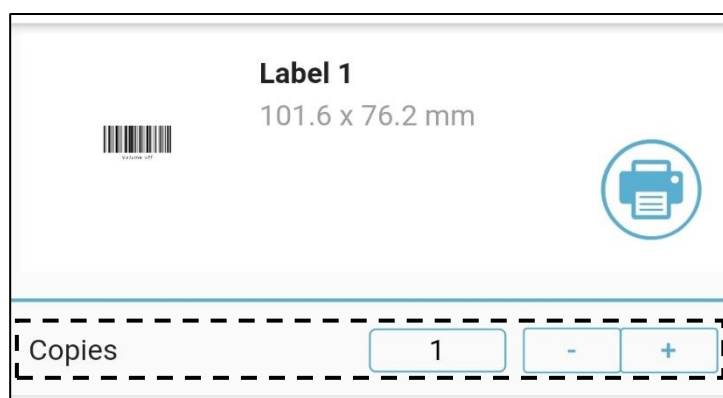
1. Connect a printer before printing the edited label. Then tap on the area of the dotted box on the Label List page.



2. Tap the **Print** button.



3. On this page, there is a *Copies* field. You can adjust the print copies by pressing the decrease or increase button () to determine how many copies of labels you will print.



4. Before printing the label(s), remember to connect a printer. If no printer is connected and the print button is pressed, the warning message will be displayed on the bottom side of the screen and the printing data will not be set to any printer.

