

# O4 series



## Your First Choice in mid-range desktop printer



Best Label-saving Protocol!



### Before



Waste time, waste money in using last generation low-end desktop printer.

### After

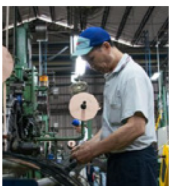


Using new generation desktop printer to save time and money.

### Application



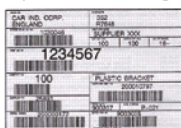
#### Retail



#### Manufacturing



#### Transportation & Logistics



### Feature-rich to make daily work simple and easy



#### Clamshell design, easy load

The O4 series features a user-friendly clamshell design that allows users to simply open the cover and loading ribbon and media.



#### Up to 7-inch per second Printing Speed

Featuring 7-ips printing speed. No compromised printing quality even run at the maximum speed.



Seamless-converting to Argox printers!

#### Automatic Language Emulation Detection

Automatic adopting commonly used printer control languages for maximized user friendliness. (Auto-Detection & Auto-Conversion)

\*Sales representative for demonstration video.



#### Multiple Interfaces

Built-in Ethernet, 2 USB host ports, USB device, RS-232 and it can be expanded with Wi-Fi, Bluetooth v4.2.



Best Label-saving Protocol!

Print Specifications	O4-250	O4-350
Printing Method	Direct Thermal & Thermal Transfer	
Printing Resolution	203 dpi (8 dots/mm)	300 dpi (12 dots/mm)
Printing Speed	Max. 7 ips	Max. 6 ips
Printing Length	Max. 100"(2540 mm)	Max. 50"(1270 mm)
Printing Width	Max. 4.25"(108 mm)	Max. 4.16"(105.7 mm)
Memory	32 MB SDRAM, 16MB Flash ROM (USB storage up to 32GB)	
CPU Type	32 bit RISC microprocessor	
Consumables Specifications		
Sensors	Reflective sensor x 1 (movable) & Transmissive sensor x 1 (fixed, 6.27mm offset)	
Media Type	Roll-feed, die-cut, continuous, fan-fold, black mark, tags, ticket in thermal paper or plain paper	
Media	Max. width: 4.65" (118mm). Min. width: 0.8" (20mm). Thickness: 0.0024"~0.008" (0.06mm~0.2mm) 5"(127mm) OD on a 1"/1.5" (25.4/38 mm) ID core; 4.5"(115mm) OD on a 0.5" (12.7mm) ID core Dealer Option external media stand 8" OD on 1"/3" ID Core	
Ribbon	Ribbon width: 1"~4.33"(25.4 mm~110mm), Ribbon length: Max. 110m. Core size ID 0.5"(12.7 mm), Core width: 4.33"(110mm)with notch Wax, Wax/Resin, Resin (Ribbon wound ink-side out or ink-side in: auto-detect)	
Fonts & Symbologies		
Fonts	Internal character sets standard 5 alpha-numeric fonts from 0.049"H ~ 0.23" H (1.25mm ~ 6.0mm) Internal fonts are expandable up to 24x24 4 direction 0 ~ 270 rotation Soft fonts are downloadable Ability to print any Windows True Type font easily. Support scalable font	
1D Barcodes	UPC-A, UPC-E, JAN/EAN, CODE39, CODE93, CODE128, GS1-128 (UCC/EAN128), CODABAR (NW-7), ITF, Industrial 2of5, MSI, UPCadd-on code, POSTNET, GS1 DataBar Omnidirectional, GS1 DataBar Truncated, GS1 DataBar Stacked, GS1 DataBar Stacked Omnidirectional, GS1DataBar Limited, GS1 DataBar Expanded, GS1DataBar Expanded Stacked	
2D Barcodes	QR Code, PDF417 (includingMicroPDF), DataMatrix (ECC200), GS1 DataMatrix, MaxiCode	
Graphics	PPLA: PCX, BMP, IMG, HEX,GDI PPLB: PCX, BMP, Binary raster, GDI PPLZ: GRF, Hex, GDI	
Emulation	PPLA, PPLB, PPLZ	
Interface Characteristics and Integration		
Operation Interface	LED Indicator x 2, Button(Feed) x 1	
Communication Interface	USB device, RS-232, Ethernet, USB host x 2	
Drivers	Windows Driver for Windows XP/Vista/Win7/Win8/Win10, LINUX Driver, macOS Driver, Raspberry Pi Driver	
Software	BarTender, Printer Tool	
Database Link	Argobar Pro support ODBC Database Connection: Excel, CSV, MS Access, MS SQL, Oracle MySQL, dBASE (*.dbf)	
Operating & Environment Characteristics		
Power Source	Universal Switching Power supply. AC input voltage: 100~240V, 50~60Hz. DC Output: 24V, 2.5A	
Operation Environment	Operation Temperature: 41°F~104°F (5°C~40°C), 0% ~ 90% non-condensing, Storage Temperature: -4°F~122°F (-20°C~50°C)	
Agency Listing	CB, CE, FCC, cTUVus, Energy Star, RoHS, BSMI, RCM, CB, BIS, KCC	
Physical Characteristics		
Printer Dimensions	W 209mm x H 179.2mm x D 266mm	
Printer Weight	4.8 lbs (2.2 kg)	



**Inter-Register Communication (M) Sdn. Bhd. [ 198701004225 (162895-K) ]**

34, Jalan Tanjung SD 13/1, Bdr Sri Damansara,  
52200 Kuala Lumpur.  
Tel: (6)03-6272 8000 (8 Line) Fax: (6)03-6272 3210  
general@irc.com.my  
www.irc.com.my

**Authorise Resseller :**