



I4 / DX Series

Wi-Fi Installation Guide



Part No : 49-I2502-001

Revision Date : Nov. 2016

Note:

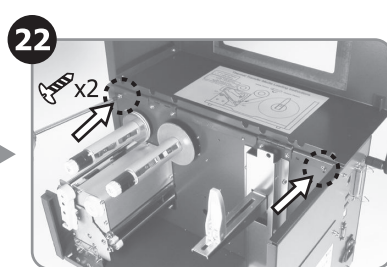
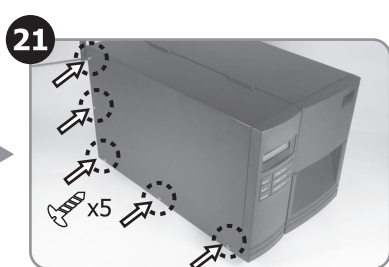
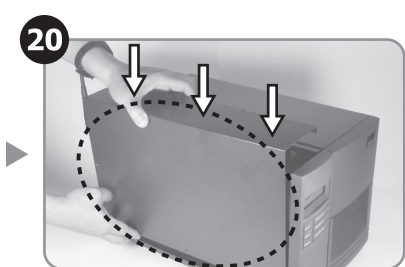
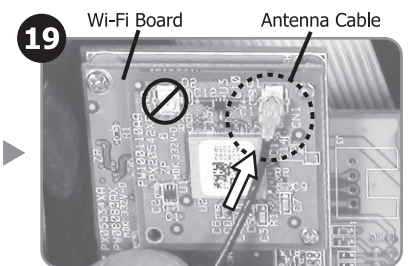
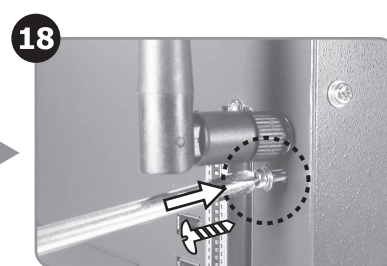
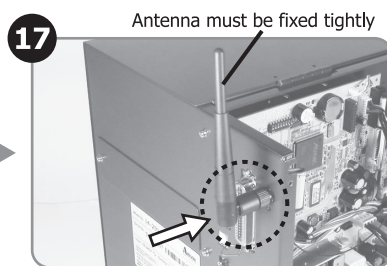
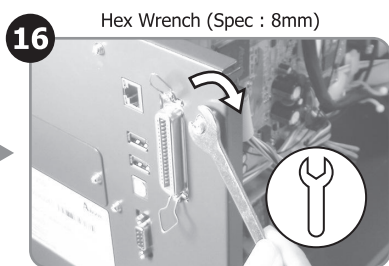
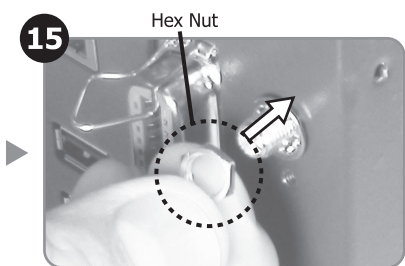
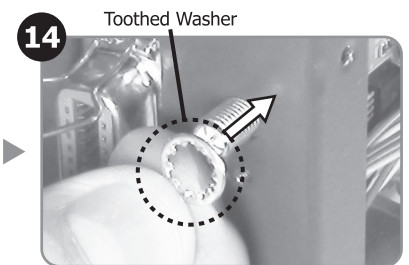
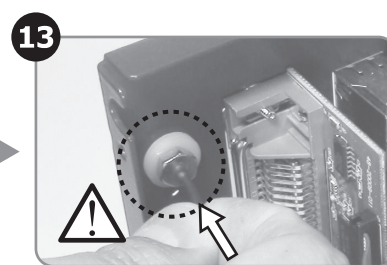
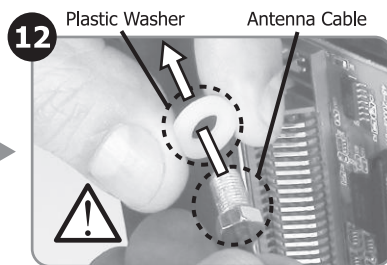
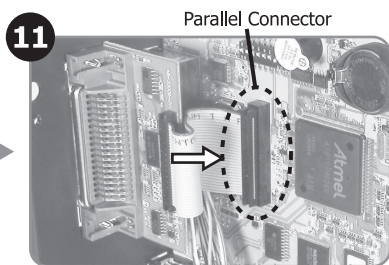
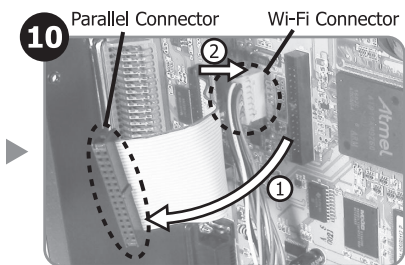
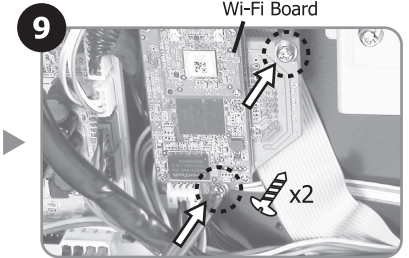
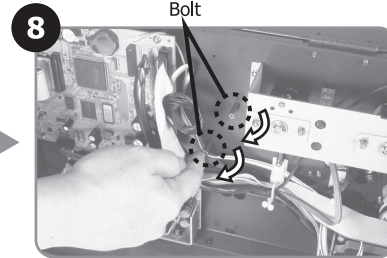
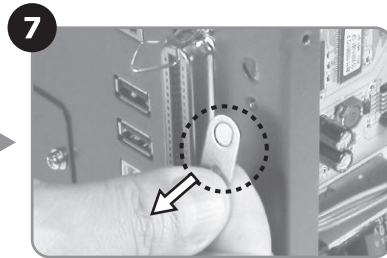
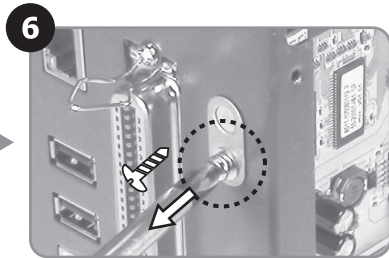
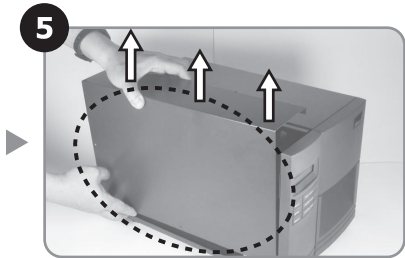
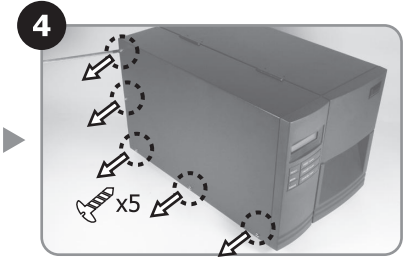
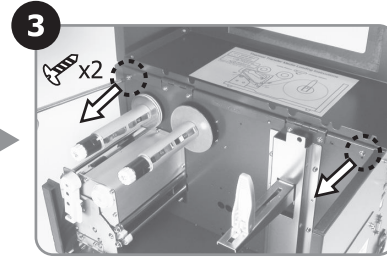
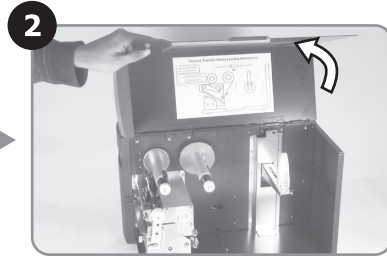
*Specifications, accessories, parts and programs are subject to change without notice.

Argox Information Co., Ltd.

7F., No.126, Ln.235, Baoqiao Rd., Xindian Dist.,
New Taipei City 231, Taiwan (R.O.C.)
Tel: +886-2-8912-1121 Fax: +886-2-8912-1124
<http://www.argo.com>

Copyright © 2016, Argox Information Co., Ltd. All Rights Reserved.

START



⚠ Caution:
Be careful with the steps because the antenna mount is quite fragile. The antenna may break if you use excessive force when pushing or pulling it.