

D4 series



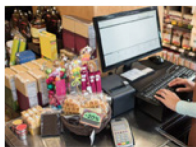
Best Value in mid-range direct-thermal printer



Best Label-saving Protocol!



Before



The desk was rumpled and surveying the mess of things, the space is limited.

After



The compact D4 series fits into tight spaces. Everything was arranged in perfect order.

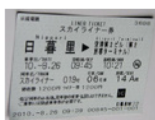
Application



Healthcare



Ticket



Retail



Feature-rich to make daily work simple and easy



printing speed up to 6 inches per second

D4 series in the printing speed is a substantial increase in the maximum speed, which can reach 6 ips.



Ultra Friendly Calibration Modes

Single key Intelli- and Smart-mode calibration performing tasks immediately after installation.



Seamless-converting to Argox printers!

Automatic Language Emulation Detection

Automatic adopting commonly used printer control languages for maximized user friendliness. (Auto-Detection & Auto-Conversion)



Multiple Interfaces

The D4 series has built-in Ethernet, USB host, USB device, RS-232 and it can be expanded with Wi-Fi, Bluetooth v2.1.

*Sales representative for demonstration video.



Best Label-saving Protocol!

Print Specifications	D4-250	D4-350
Printing Method	Direct Thermal	
Printing Resolution	203 dpi (8 dots/mm)	300 dpi (12 dots/mm)
Printing Speed	Max. 6 ips	Max. 4 ips
Printing Length	Max. 100"(2540 mm)	Max. 50"(1270 mm)
Printing Width	Max. 4.25"(108 mm)	Max. 4.16"(105.7 mm)
Memory	32 MB SDRAM, 16MB Flash ROM (USB storage up to 32GB)	
CPU Type	32 bit RISC microprocessor	
Consumables Specifications		
Sensors	Reflective sensor x 1 (movable) & Transmissive sensor x 1 (fixed, 6.27mm offset)	
Media Type	Roll-feed, die-cut, continuous, fan-fold, black mark, tags, ticket in thermal paper or plain paper	
Media	Max. width: 4.65" (118mm). Min. width: 0.88" (22.4mm). Thickness: 0.0024"~0.0075" (0.06mm~0.19mm) 5"(127mm) OD on a 1"/1.5" (25.4/38 mm) ID core; Dealer Option external media stand 8" OD on 1"/3" ID Core	
Fonts & Symbologies		
Fonts	Internal character sets standard 5 alpha-numeric fonts from 0.049"H ~ 0.23" H (1.25mm ~ 6.0mm) Internal fonts are expandable up to 24x24 4 direction 0 ~ 270 rotation Soft fonts are downloadable Ability to print any Windows True Type font easily. Support scalable font	
1D Barcodes	UPC-A, UPC-E, JAN/EAN, CODE39, CODE93, CODE128, GS1-128 (UCC/EAN128), CODABAR (NW-7), ITF, Industrial 2of5, MSI, UPCadd-on code, POSTNET, GS1 DataBar Omnidirectional, GS1 DataBar Truncated, GS1 DataBar Stacked, GS1 DataBar Stacked Omnidirectional, GS1DataBar Limited, GS1 DataBar Expanded, GS1DataBar Expanded Stacked	
2D Barcodes	QR Code, PDF417 (including MicroPDF), DataMatrix (ECC200), GS1 DataMatrix, MaxiCode	
Graphics	PPLA: PCX, BMP, IMG, HEX, GDI PPLB: PCX, BMP, Binary raster, GDI PPLZ: GRF, Hex, GDI	
Emulation	PPLA, PPLB, PPLZ	
Interface Characteristics and Integration		
Operation Interface	LED Indicator x 2, Button(Feed) x 1	
Communication Interface	USB device, RS-232, Ethernet, USB host	
Drivers	Windows Driver for Windows XP/Vista/Win7/Win8/Win10, LINUX Driver, macOS Driver, Raspberry Pi Driver	
Software	BarTender, Printer Tool	
Database Link	Argobar Pro support ODBC Database Connection: Excel, CSV, MS Access, MS SQL, Oracle MySQL, dBASE (*.dbf)	
Operating & Environment Characteristics		
Power Source	Universal Switching Power supply. AC input voltage: 100~240V, 50~60Hz. DC Output: 24V, 2.5A	
Operation Environment	Operation Temperature: 41°F~104°F (5°C~40°C), 0% ~ 90% non-condensing, Storage Temperature: -4°F~140°F (-20°C~60°C)	
Agency Listing	CE, FCC, cULus, RoHS, BSMI, RCM, CB, BIS	
Physical Characteristics		
Printer Dimensions	W 183mm x H 166mm x D 225.9mm	
Printer Weight	3.88 lbs (1.76 kg)	



Inter-Register Communication (M) Sdn. Bhd. [198701004225 (162895-K)]
 34, Jalan Tanjung SD 13/1, Bdr Sri Damansara,
 52200 Kuala Lumpur.
Tel: (6) 03-6272 8000 (8 Line) **Fax:** (6) 03-6272 3210
 general@irc.com.my
 www.irc.com.my

Authorise Resseller :